

# REGO-FIX®



powRgrip®  
System



PGU9500  
Improved  
Design



Swiss  
Precision  
Tools

# powRgrip® Clamping System

### Hightech Clamping System

#### powRgrip® Toolholding System

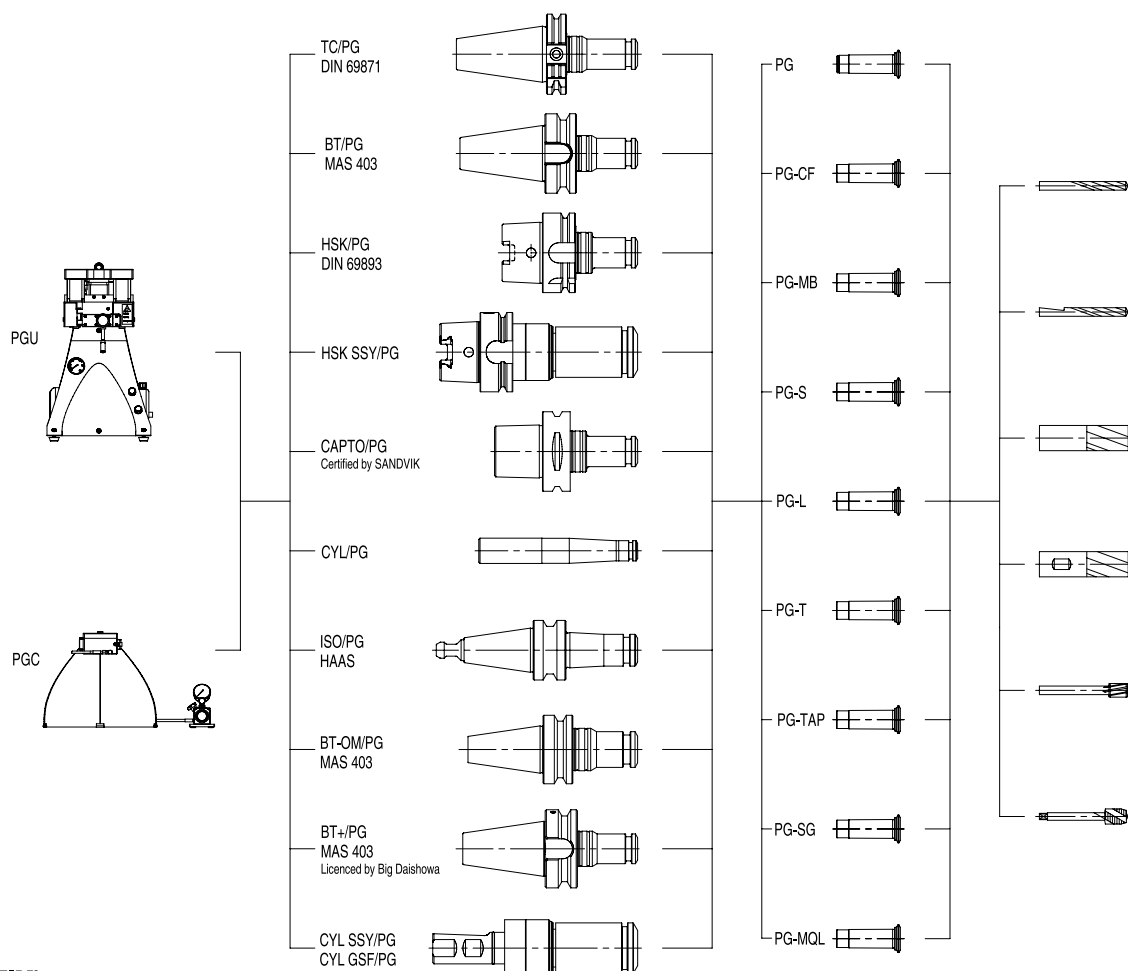
**powRgrip® System** increases your **tool life** and **saves you time**.

With the powRgrip® System developed by REGO-FIX®, your tools are **safely and precisely clamped**. Your tool is **easily and precisely** clamped in the collet holder and released for removal **at the touch of a button** with the powRgrip® collet and the powRgrip® clamping unit.

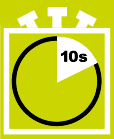
**Even after 20'000 clamping cycles**, powRgrip® collets and collet holders show hardly any signs of wear and thus have an **extremely long service life**.

**When buying original REGO-FIX® precision products, make sure to look for the quality symbol  $\Delta$ .**

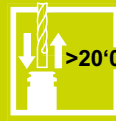
powRgrip® is a registered trademark of REGO-FIX AG.



## powRgrip® System: Features and Advantages



Tools are clamped in **less than 10 seconds** – thanks to the automated clamping operation



Maximum **clamping force** and runout, even after 20'000 tool changes



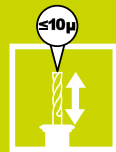
**Runout ≤ 3 µm**



High **flexibility**:  
 ● Minimum clamping diameter 0.2 mm  
 ● All shank materials can be clamped

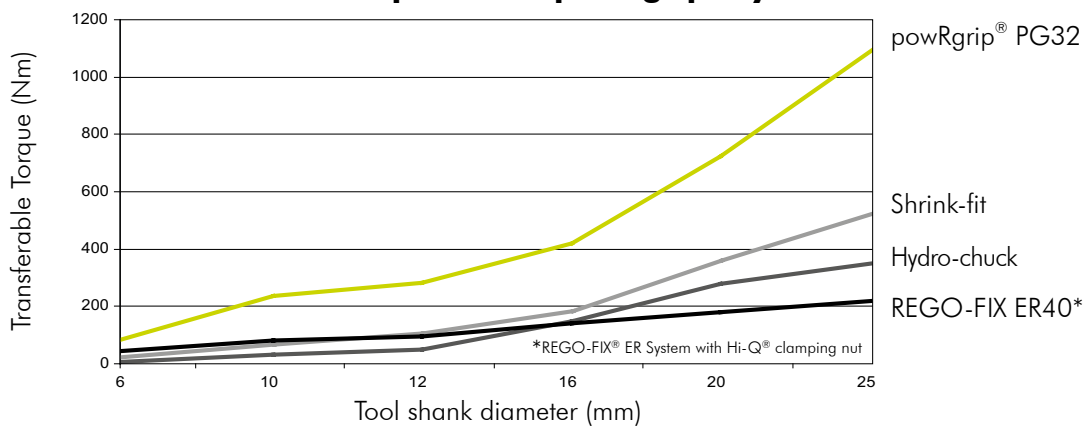


High **vibration dampening** thanks to two interfering surfaces:  
 ● Toolholder/collet  
 ● Collet/cutter tool

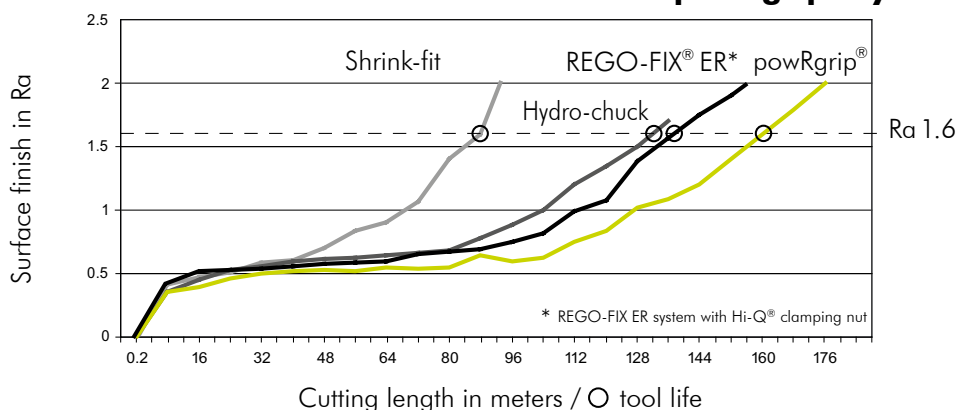


Precise **length presetting** with repetition precision ≤ 10 µm

### Transferable Torque of the powRgrip® System



### Increased Cutter Tool Life with the powRgrip® System



### How the powRgrip® System Works

The powRgrip® System consists of

- the high-precision **powRgrip® collet**
- the **powRgrip® colletholder**
- the **powRgrip® clamping unit**,

and clamps the powRgrip® collet into the powRgrip® toolholder with **a force of up to 90 kN**.

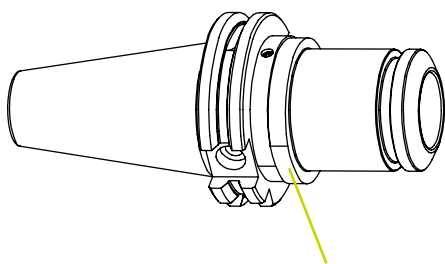
The **pressure fit** provided between the collet and toolholder creates a **radial force**, which is concentrated on the tool shank via the slotted collet and holds the tool **safely** and **with a high degree of concentricity**.

### It's this Easy to Use!

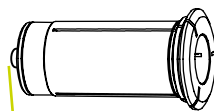
Toolholders are available in different designs

Interchangeable powRgrip® collet

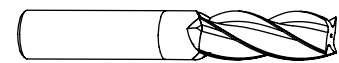
Carbide or HSS milling cutter in all shank forms (Weldon, Whistle-Notch, etc.)



Colletholder with fine balancing grooves for optional balancing rings



Setting screw for length presetting of the tool to be clamped



h6 tool shank (for tap/thread molder h9)

# Toolholders

## powRgrip® System Toolholders

**Made in Switzerland** with the highest quality

All powRgrip® collets are completely manufactured at our headquarters in Tenniken, Switzerland. REGO-FIX® is certified according to ISO 9001/14001.

The tapers are manufactured in **tolerance class AT3**. This ensures perfect spindle adjustment and the best concentricity.

Maximum precision and the best results thanks to the overall system solution. REGO-FIX® components are carefully matched with each other and therefore achieve an **overall system concentricity of  $\leq 3 \mu\text{m}$**  as well as minimum residual imbalance.

The different powRgrip® collets are balanced as follows:

● ISO 20 (HAAS)	Up to 40'000 min <sup>-1</sup>
● TC 30, BT 30, BT-OM 30, BT+ 30	Up to 30'000 min <sup>-1</sup>
● TC 40, BT 40, BT+ 40, TC 50, BT 50, BT+ 50	G2.5 @ 22'000 min <sup>-1</sup>
● REGO-FIX CAPTO	G2.5 @ 25'000 min <sup>-1</sup>
● HSK 25	Up to 90'000 min <sup>-1</sup>
● HSK 32	Up to 60'000 min <sup>-1</sup>
● HSK 40	Up to 45'000 min <sup>-1</sup>
● HSK 50	Up to 36'000 min <sup>-1</sup>
● HSK 63, HSK 80, HSK 100, HSK 125	G2.5 @ 25'000 min <sup>-1</sup>
● XL Xtended Length toolholder	G2.5 @ 5'000 min <sup>-1</sup>

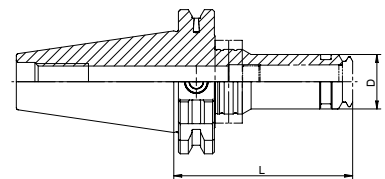
REGO-FIX® developed a system which allows the fine balancing of toolholders including cutting tool of up to 80,000 min<sup>-1</sup>. The revolution speed rate is depending on the used balancing ring. Toolholders with the additional type information "H" in the part number are prepared for this.

### TC PG powRgrip® Colletholder DIN 69871

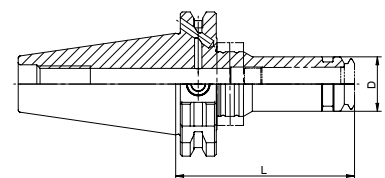
Type	Form A + AD Part no.	Form AD + B Part no.	D [mm]	L [mm]	Balancing rings
TC 30 / PG 6 x 080 H	4230.70640	–	10	80	FWR 225
TC 30 / PG 10 x 060	2230.71020	–	16	60	–
TC 30 / PG 10 x 073 H	4230.71030	–	16	73	FWR 285
TC 30 / PG 15 x 060	2230.71520	–	24	60	–
TC 30 / PG 15 x 080 H	4230.71540	–	24	80	FWR 285
TC 30 / PG 15 x 120 H	4230.71560	–	24	120	FWR 285
TC 30 / PG 25 x 080	2230.72540	–	40	80	–
TC 30 / PG 25 x 160 H	4230.72580	–	40	160	FWR 405

TC 40 / PG 10 x 080 H	4240.71040	4240.71043	16	80	FWR 285
TC 40 / PG 10 x 120 H	4240.71060	4240.71063	16	120	FWR 285
TC 40 / PG 10 x 160 H	4240.71080	4240.71083	16	160	FWR 325
TC 40 / PG 15 x 072	2240.71530	2240.71533	24	72	–
TC 40 / PG 15 x 080 H	4240.71540	4240.71543	24	80	FWR 285
TC 40 / PG 15 x 120 H	4240.71560	4240.71563	24	120	FWR 325
TC 40 / PG 15 x 160 H	4240.71580	4240.71583	24	160	FWR 325/285
TC 40 / PG 25 x 072	2240.72530	2240.72533	40	72	–
TC 40 / PG 25 x 080 H	4240.72540	4240.72543	40	80	FWR 405
TC 40 / PG 25 x 120 H	4240.72560	4240.72563	40	120	FWR 405
TC 40 / PG 25 x 160 H	4240.72580	4240.72583	40	160	FWR 405/405
TC 40 / PG 32 x 080	2240.73240	2240.73243	50	80	–

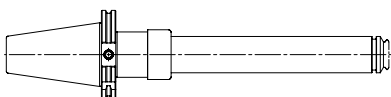
TC 50 / PG 25 x 081	2250.72540	2250.72543	40	81	–
TC 50 / PG 25 x 100 H	4250.72550	4250.72553	40	100	FWR 505
TC 50 / PG 25 x 160 H	4250.72580	4250.72583	40	160	FWR 505/405
TC 50 / PG 25 x 200 H	4250.72590	4250.72593	40	200	FWR 505/405
TC 50 / PG 32 x 080	2250.73240	2250.73243	50	80	–



Form A + AD



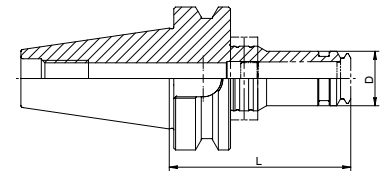
Form AD + B



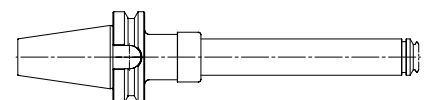
Extra long toolholder (Xtended Length) – see from page 15.



## BT PG powRgrip® Colletholder MAS 403

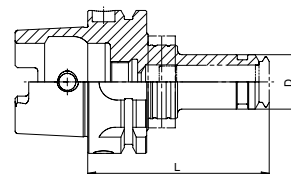


Type	Form A + AD Part no.	Form AD + B Part no.	D [mm]	L [mm]	Balancing rings
BT 30 / PG 6 x 050	2130.70610	–	10	50	–
BT 30 / PG 6 x 080 H	4130.70640	–	10	80	FWR 225
BT 30 / PG 10 x 062	2130.71020	–	16	62	–
BT 30 / PG 10 x 080 H	4130.71040	–	16	80	FWR 285
BT 30 / PG 10 x 120 H	4130.71060	–	16	120	FWR 285
BT 30 / PG 10 x 160 H	4130.71080	–	16	160	FWR 285
BT 30 / PG 15 x 070 H	4130.71530	–	24	70	FWR 285
BT 30 / PG 15 x 120 H	4130.71560	–	24	120	FWR 285
BT 30 / PG 25 x 080 H	4130.72540	–	40	80	FWR 405
BT 30 / PG 25 x 120 H	4130.72560	–	40	120	FWR 405
BT 30 / PG 25 x 160 H	4130.72580	–	40	160	FWR 405/405
BT 40 / PG 10 x 080 H	4140.71040	4140.71043	16	80	FWR 285
BT 40 / PG 10 x 120 H	4140.71060	4140.71063	16	120	FWR 325
BT 40 / PG 10 x 160 H	4140.71080	4140.71083	16	160	FWR 325
BT 40 / PG 15 x 080 H	4140.71540	4140.71543	24	80	FWR 285
BT 40 / PG 15 x 120 H	4140.71560	4140.71563	24	120	FWR 325
BT 40 / PG 15 x 160 H	4140.71580	4140.71583	24	160	FWR 325/285
BT 40 / PG 25 x 080 H	4140.72540	4140.72543	40	80	FWR 405
BT 40 / PG 25 x 120 H	4140.72560	4140.72563	40	120	FWR 405
BT 40 / PG 25 x 160 H	4140.72580	4140.72583	40	160	FWR 405/405
BT 40 / PG 32 x 086	2140.73240	2140.73243	50	86	–
BT 50 / PG 10 x 120 H	4150.71060	–	16	120	FWR 405
BT 50 / PG 10 x 160 H	4150.71080	–	16	160	FWR 405
BT 50 / PG 15 x 120 H	4150.71560	–	24	120	FWR 325
BT 50 / PG 15 x 160 H	4150.71580	–	24	160	FWR 325
BT 50 / PG 25 x 100	2150.72550	–	40	100	–
BT 50 / PG 25 x 120 H	4150.72560	–	40	120	FWR 505
BT 50 / PG 25 x 160 H	4150.72580	–	40	160	FWR 505/405
BT 50 / PG 25 x 200 H	4150.72590	–	40	200	FWR 505/405
BT 50 / PG 32 x 100	2150.73250	–	50	100	–



Extra long toolholder (Xtended Length) – see from page 15.

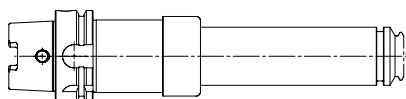
### HSK-A PG powRgrip® Colletholder DIN 69893/ISO12164



Type	Part no.	D [mm]	L [mm]	Balancing rings
HSK-A 32 / PG 10 x 060	2532.71020	15	60	-
HSK-A 32 / PG 15 x 075	2532.71530	24	75	-
HSK-A 40 / PG 6 x 048	2540.70610	10	48	-
HSK-A 40 / PG 6 x 080 H	4540.70640	10	80	FWR 225
HSK-A 40 / PG 10 x 062	2540.71020	16	62	-
HSK-A 40 / PG 15 x 080 H	4540.71540	24	80	FWR 285
HSK-A 40 / PG 25 x 100 H	4540.72550	40	100	FWR 405
HSK-A 50 / PG 10 x 080 H	4550.71040	16	80	FWR 285
HSK-A 50 / PG 15 x 080 H	4550.71540	22	80	FWR 285
HSK-A 50 / PG 25 x 100 H	4550.72550	33	100	FWR 405
HSK-A 63 / PG 6 x 080 H	4563.70640	10	80	FWR 225
HSK-A 63 / PG 10 x 080 H	4563.71040	16	80	FWR 325
HSK-A 63 / PG 10 x 120 H	4563.71060	16	120	FWR 325
HSK-A 63 / PG 10 x 160 H	4563.71080	16	160	FWR 325
HSK-A 63 / PG 10 x 200 H	4563.71090	16	200	FWR 325
HSK-A 63 / PG 15 x 080 H	4563.71540	24	80	FWR 325
HSK-A 63 / PG 15 x 120 H	4563.71560	24	120	FWR 325
HSK-A 63 / PG 15 x 160 H	4563.71580	24	160	FWR 325/285

Type	Part no.	D [mm]	L [mm]	Balancing rings
HSK-A 63 / PG 25 x 100 H	4563.72550	40	100	FWR 405
HSK-A 63 / PG 25 x 120 H	4563.72560	40	120	FWR 405
HSK-A 63 / PG 25 x 160 H	4563.72580	40	160	FWR 405/405
HSK-A 63 / PG 25 x 200 H	4563.72590	40	200	FWR 405/405
HSK-A 63 / PG 32 x 100	2563.73250	50	100	-
HSK-A 63 / PG 32 x 120 H	4563.73260	50	120	FWR 505
HSK-A 80 / PG 15 x 085 H	4580.71540	24	85	FWR 325
HSK-A 80 / PG 25 x 100 H	4580.72550	40	100	FWR 505
HSK-A 80 / PG 32 x 105 H	4580.73250	50	105	FWR 505
HSK-A 100 / PG 10 x 085 H	4500.71040	16	85	FWR 405
HSK-A 100 / PG 10 x 160 H	4500.71080	16	160	FWR 405
HSK-A 100 / PG 15 x 085 H	4500.71540	24	85	FWR 405
HSK-A 100 / PG 15 x 160 H	4500.71580	24	160	FWR 405/285
HSK-A 100 / PG 25 x 100 H	4500.72550	40	100	FWR 505
HSK-A 100 / PG 25 x 160 H	4500.72580	40	160	FWR 505/405
HSK-A 100 / PG 25 x 200 H	4500.72590	40	200	FWR 505/405
HSK-A 100 / PG 32 x 106 H	4500.73250	50	106	FWR 505
HSK-A 100 / PG 32 x 160 H	4500.73280	50	160	FWR 505
HSK-A 100 / PG 32 x 200 H	4500.73290	50	200	FWR 505/505

HSK-A 125 on demand



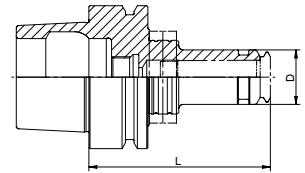
Extra long toolholder (Xtended Length) – see from page 15.





Swiss  
Precision  
Tools

## HSK-E PG powRgrip® Colletholder DIN 69893/ISO12164

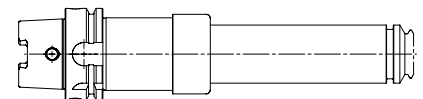
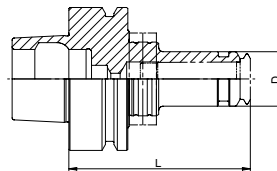


Type	Part no.	D [mm]	L [mm]	Balancing rings
HSK-E 25 / PG 6 x 043	2525.70614	10	43	–
HSK-E 25 / PG 10 x 055	2525.71014	16	55	–
HSK-E 32 / PG 6 x 048	2532.70614	10	48	–
HSK-E 32 / PG 6 x 080	2532.70644	10	80	–
HSK-E 32 / PG 10 x 060	2532.71024	16	60	–
HSK-E 32 / PG 10 x 080	2532.71044	16	80	–
HSK-E 32 / PG 15 x 075	2532.71534	24	75	–
HSK-E 40 / PG 6 x 048	2540.70614	10	48	–
HSK-E 40 / PG 6 x 080 H	4540.70644	10	80	FWR 225
HSK-E 40 / PG 10 x 062	2540.71024	16	62	–
HSK-E 40 / PG 10 x 080 H	4540.71044	16	80	FWR 225
HSK-E 40 / PG 10 x 120 H	4540.71064	16	120	FWR 225
HSK-E 40 / PG 10 x 160 H	4540.71084	16	160	FWR 285

Type	Part no.	D [mm]	L [mm]	Balancing rings
HSK-E 40 / PG 15 x 080 H	4540.71544	24	80	FWR 285
HSK-E 40 / PG 15 x 120 H	4540.71564	24	120	FWR 285
HSK-E 40 / PG 25 x 090	2540.72544	40	90	–
HSK-E 40 / PG 25 x 100 H	4540.72554	40	100	FWR 405
HSK-E 50 / PG 6 x 080 H	4550.70644	10	80	FWR 225
HSK-E 50 / PG 10 x 080 H	4550.71044	16	80	FWR 285
HSK-E 50 / PG 10 x 120 H	4550.71064	16	120	FWR 285
HSK-E 50 / PG 10 x 160 H	4550.71084	16	160	FWR 285
HSK-E 50 / PG 15 x 080 H	4550.71544	22	80	FWR 285
HSK-E 50 / PG 15 x 120 H	4550.71564	22	120	FWR 285
HSK-E 50 / PG 25 x 100 H	4550.72554	40	100	FWR 405
HSK-E 63 / PG 15 x 080 H	4563.71544	24	80	FWR 325
HSK-E 63 / PG 25 x 100 H	4563.72554	40	100	FWR 405

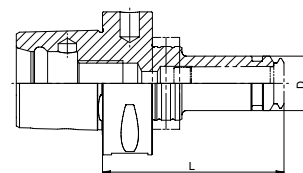
## HSK-F PG powRgrip® Colletholder DIN 69893/ISO12164

Type	Part no.	D [mm]	L [mm]	Balancing rings
HSK-F 63 / PG 10 x 080 H	4563.71045	16	80	FWR 325
HSK-F 63 / PG 10 x 120 H	4563.71065	16	120	FWR 325
HSK-F 63 / PG 10 x 160 H	4563.71085	16	160	FWR 325
HSK-F 63 / PG 15 x 080 H	4563.71545	22	80	FWR 325
HSK-F 63 / PG 15 x 120 H	4563.71565	22	120	FWR 325
HSK-F 63 / PG 15 x 160 H	4563.71585	22	160	FWR 325/285
HSK-F 63 / PG 25 x 100 H	4563.72555	40	100	FWR 405
HSK-F 63 / PG 25 x 160 H	4563.72585	40	160	FWR 405/405
HSK-F 63 / PG 32 x 100	2563.73255	50	100	–



Extra long toolholder (Xtended Length) – see from page 15.

### REGO-FIX CAPTO PG powRgrip® Colletholder ISO26623



Type	Part no.	D [mm]	L [mm]	Balancing rings
C3 / PG 6 x 045	2803.70610	10	45	–
C3 / PG 10 x 055	2803.71010	16	55	–
C3 / PG 15 x 067	2803.71520	24	67	–

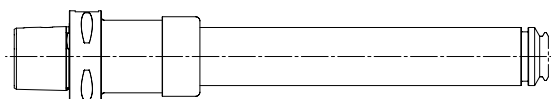
C4 / PG 6 x 048	2804.70610	10	48	–
C4 / PG 10 x 060	2804.71020	16	60	–
C4 / PG 10 x 080 H	4804.71040	16	80	FWR 225
C4 / PG 15 x 062	2804.71520	24	62	–
C4 / PG 15 x 080 H	4804.71540	24	80	FWR 285

C5 / PG 6 x 080 H	4805.70640	10	80	FWR 225
C5 / PG 10 x 060	2805.71020	16	60	–
C5 / PG 10 x 080 H	4805.71040	16	80	FWR 285
C5 / PG 10 x 120 H	4805.71060	16	120	FWR 285
C5 / PG 15 x 065	2805.71520	24	65	–
C5 / PG 15 x 080 H	4805.71540	24	80	FWR 285
C5 / PG 15 x 120 H	4805.71560	24	120	FWR 325

Type	Part no.	D [mm]	L [mm]	Balancing rings
C5 / PG 25 x 080	2805.72540	40	80	–
C5 / PG 25 x 100 H	4805.72550	40	100	FWR 405

C6 / PG 10 x 080 H	4806.71040	16	80	FWR 325
C6 / PG 10 x 120 H	4806.71060	16	120	FWR 325
C6 / PG 10 x 160 H	4806.71080	16	160	FWR 325
C6 / PG 15 x 080 H	4806.71540	24	80	FWR 325
C6 / PG 15 x 120 H	4806.71560	24	120	FWR 325
C6 / PG 15 x 160 H	4806.71580	24	160	FWR 325
C6 / PG 25 x 085	2806.72540	40	85	–
C6 / PG 25 x 100 H	4806.72550	40	100	FWR 405
C6 / PG 25 x 120 H	4806.72560	40	120	FWR 405
C6 / PG 25 x 160 H	4806.72580	40	160	FWR 405
C6 / PG 32 x 090	2806.73240	50	90	–

C8 / PG 25 x 092	2808.72540	40	92	–
C8 / PG 32 x 090	2808.73240	50	90	–



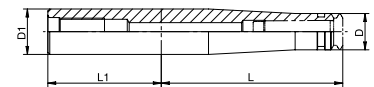
Extra long toolholder (Extended Length) – see from page 15.



Swiss  
Precision  
Tools

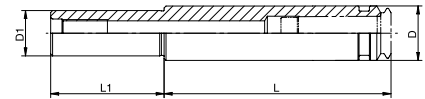
## Cylindrical PG powRgrip® Colletholder DIN 1835 B+E

Type	Part no.	D [mm]	L [mm]	D1 h6 [mm]	L1 [mm]	Drawing
CYL 10 / PG 6 x 120	2610.70620	10	120	10	30	1
CYL 10 / PG 10 x 120	2610.71020	16	120	10	40	2



Drawing 1

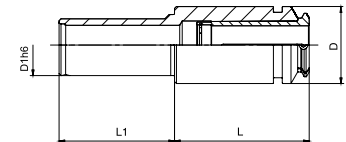
CYL 20 / PG 10 x 120	2620.71020	16	120	20	50	1
CYL 20 / PG 10 x 160	2620.71040	16	160	20	50	1
CYL 20 / PG 10 x 200	2620.71060	16	200	20	50	1
CYL 20 / PG 15 x 120	2620.71520	24	120	20	50	2



Drawing 2

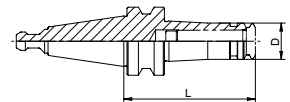
## CYL-T for turning applications powRgrip® Colletholder DIN 1835 B+E

Type	Part no.	Ø D [mm]	D1h6 [mm]	L [mm]	L1 [mm]
CYL-T 25 / PG 15 x 045	2625.71522	24	25	60	45
CYL-T 1" / PG 15 x 045	2625.71523	24	25.4	60	45
CYL-T 1 1/4" / PG 15 x 045	2631.71523	24	31.75	60	45
CYL-T 1 1/4" / PG 25 x 070	2631.72543	40	31.75	60	70
CYL-T 32 / PG 15 x 045	2632.71522	24	32	60	45
CYL-T 32 / PG 25 x 070	2632.72542	40	32	60	70
CYL-T 1 1/2" / PG 15 x 050	2638.71523	24	38.1	60	50
CYL-T 1 1/2" / PG 25 x 065	2638.72543	40	38.1	60	65
CYL-T 40 / PG 15 x 050	2640.71522	24	40	60	50
CYL-T 40 / PG 25 x 065	2640.72542	40	40	60	65



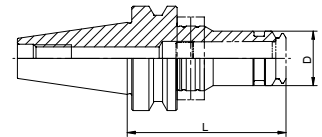
**ISO PG**  
**powRgrip® Colletholder**  
**HAAS**

Type	Part no.	D [mm]	L [mm]
ISO 20 / PG 10 x 058 HAAS	2420.71015	16	58



**BT-OM (without drive slots)**  
**powRgrip® Colletholder**  
**HAAS/HURCO**

Type	Part no.	D [mm]	L [mm]	Balancing rings
BT-OM 30 / PG 10 x 062	2130.71028	16	62	–
BT-OM 30 / PG 15 x 070 H	4130.71538	24	70	FWR 285
BT-OM 30 / PG 25 x 080 H	4130.72548	40	80	FWR 405





## BT+ REGO PLUS powRgrip® Colletholder BIG-PLUS SYSTEM – Licensed by BIG Daishowa



Higher **stiffness** due to taper and face contact



**Compatible** with BIG-Plus spindles and standard spindles (MAS BT 403)



**Coolant supply**  
Form AD+B  
as the standard design

### Brings stability: dual contact toolholder

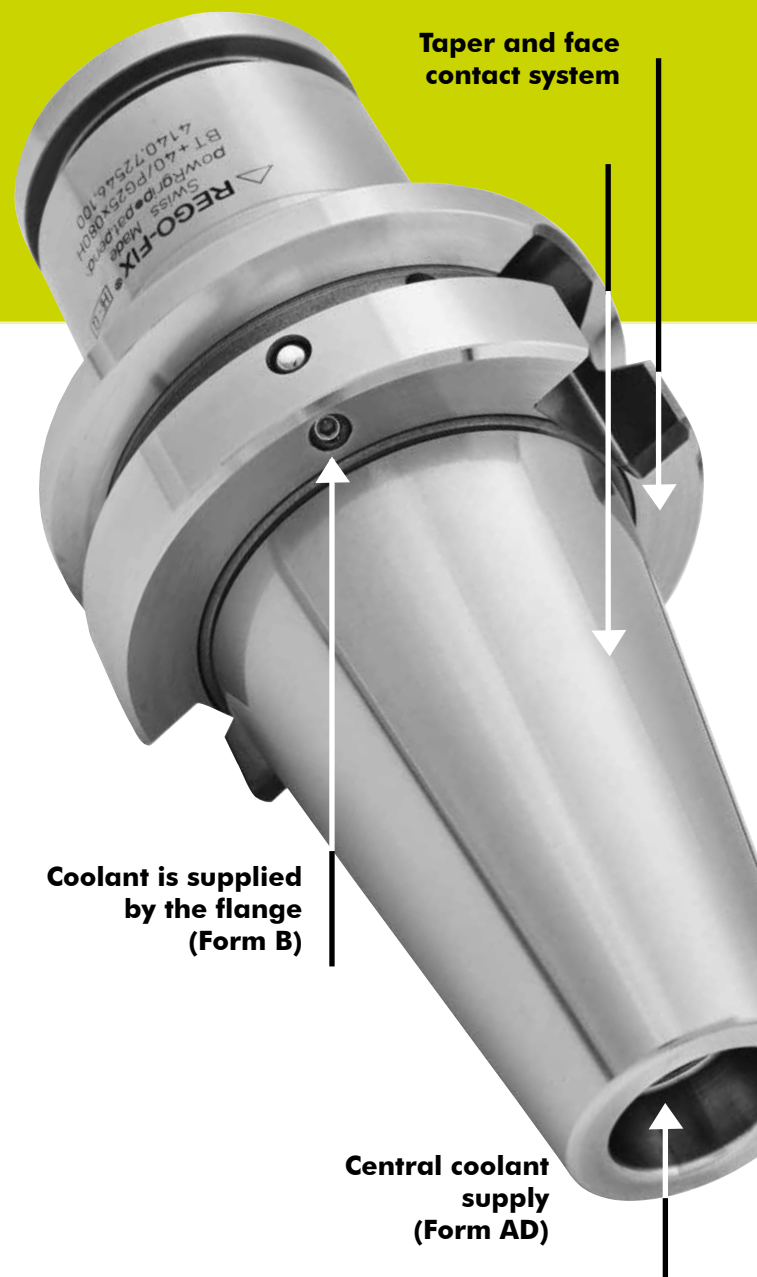


Optimal taper and surface fit of the REGO PLUS colletholders guarantees best rigidity of the tooling system.



Highest taper accuracy guarantees best taper fit and best runout of the REGO PLUS toolholders.

This taper and face contact system achieves improved stiffness and reduces vibrations. This means a longer service life for tools, spindles and machines.



Taper and face contact system

Coolant is supplied by the flange (Form B)

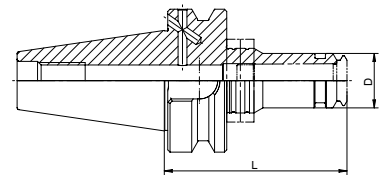
Central coolant supply (Form AD)

**BT+ REGO PLUS**  
**powRarip® Colletholder**  
**BIG-PLUS SYSTEM – Licensed by BIG Daishowa**

Type	Form AD + B Part no.	D [mm]	L [mm]	Balancing rings
BT+ 30 / PG 10 x 080 H	4130.71046	16	80	FWR 285
BT+ 30 / PG 15 x 070 H	4130.71536	24	70	FWR 285
BT+ 30 / PG 25 x 080 H	4130.72546	40	80	FWR 405
BT+ 30 / PG 25 x 160 H	4130.72586	40	160	FWR 405/405

BT+ 40 / PG 10 x 080 H	4140.71046	16	80	FWR 285
BT+ 40 / PG 10 x 120 H	4140.71066	16	120	FWR 325
BT+ 40 / PG 15 x 080 H	4140.71546	24	80	FWR 285
BT+ 40 / PG 15 x 120 H	4140.71566	24	120	FWR 325
BT+ 40 / PG 25 x 080 H	4140.72546	40	80	FWR 405
BT+ 40 / PG 25 x 120 H	4140.72566	40	120	FWR 405
BT+ 40 / PG 25 x 160 H	4140.72586	40	160	FWR 405/405

BT+ 50 / PG 25 x 120 H	4150.72566	40	120	FWR 505
BT+ 50 / PG 25 x 160 H	4150.72586	40	160	FWR 505/405





## XL Xtended Length powRgrip® Colletholder (extra long)



### Minimum interference contours

Extra long and lean design



### Vibration-dampening MFD technology

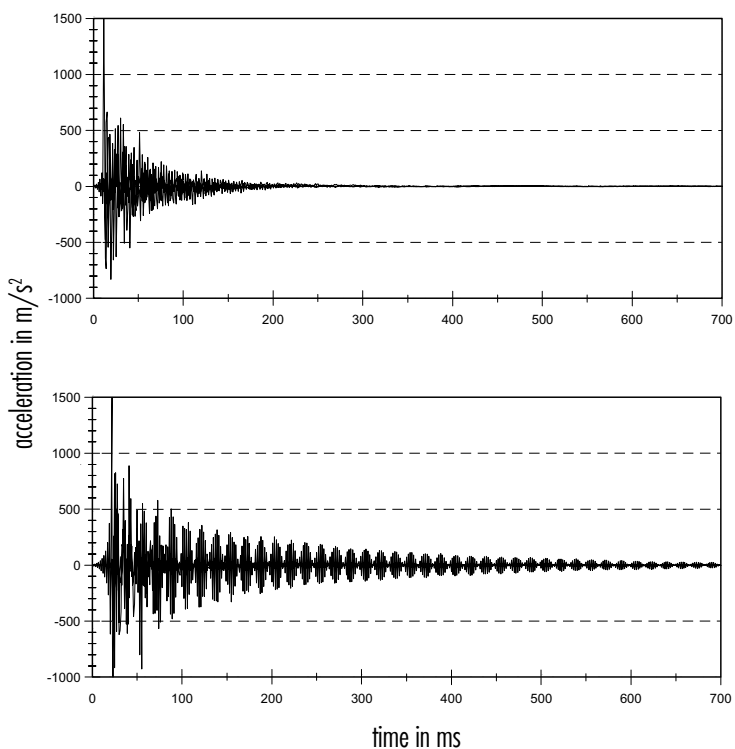
Results in longer tool life (pat. pend.)



Runout of  $\le 10 \mu\text{m}$  at 3 x D with a gauge length of up to 400 mm



## Vibration measurement with decay behavior

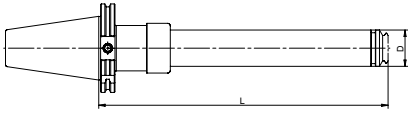


The new **MICRO-FRICTION DAMPENING™ (MFD) technology** (pat. pend.) from REGO-FIX® allows the holders to dissipate vibrations faster than standard extra-long toolholders. Dampening the vibrations faster means that your cutting tool, workpiece and spindle will see less vibrations. This results in better surface finishes, longer tool life and less spindle wear.

Standard toolholder **without vibration dampening design.**

### Important:

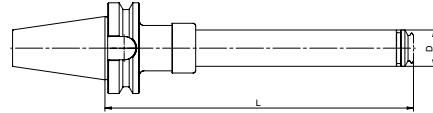
The machining parameters have to be adapted to the gauge length of the Xtended Length toolholders.



**TC PG XL**  
powRgrip® Colletholder  
DIN 69871

Type	Form A + AD Part no.	D [mm]	L [mm]
TC 40 / PG 10 x 220 XL	8842.71050	16	220
TC 40 / PG 10 x 260 XL	8842.71090	16	260
TC 40 / PG 10 x 300 XL	8842.71130	16	300
TC 40 / PG 10 x 320 XL	8842.71150	16	320
TC 40 / PG 10 x 360 XL	8842.71190	16	360
TC 40 / PG 10 x 400 XL	8842.71230	16	400
TC 40 / PG 15 x 220 XL	8842.73050	24	220
TC 40 / PG 15 x 260 XL	8842.73090	24	260
TC 40 / PG 15 x 300 XL	8842.73130	24	300
TC 40 / PG 15 x 320 XL	8842.73150	24	320
TC 40 / PG 15 x 360 XL	8842.73190	24	360
TC 40 / PG 15 x 400 XL	8842.73230	24	400
TC 40 / PG 25 x 220 XL	8842.76050	40	220
TC 40 / PG 25 x 320 XL	8842.76150	40	320

TC 50 / PG 10 x 240 XL	8852.71070	16	240
TC 50 / PG 10 x 300 XL	8852.71130	16	300
TC 50 / PG 10 x 340 XL	8852.71170	16	340
TC 50 / PG 10 x 400 XL	8852.71230	16	400
TC 50 / PG 15 x 240 XL	8852.73070	24	240
TC 50 / PG 15 x 300 XL	8852.73130	24	300
TC 50 / PG 15 x 340 XL	8852.73170	24	340
TC 50 / PG 15 x 400 XL	8852.73230	24	400
TC 50 / PG 25 x 320 XL	8852.76150	40	320



**BT PG XL**  
powRgrip® Colletholder  
MAS 403

Type	Form A + AD Part no.	D [mm]	L [mm]
BT 40 / PG 10 x 220 XL	8841.71050	16	220
BT 40 / PG 10 x 260 XL	8841.71090	16	260
BT 40 / PG 10 x 300 XL	8841.71130	16	300
BT 40 / PG 10 x 320 XL	8841.71150	16	320
BT 40 / PG 10 x 360 XL	8841.71190	16	360
BT 40 / PG 10 x 400 XL	8841.71230	16	400
BT 40 / PG 15 x 220 XL	8841.73050	24	220
BT 40 / PG 15 x 260 XL	8841.73090	24	260
BT 40 / PG 15 x 300 XL	8841.73130	24	300
BT 40 / PG 15 x 320 XL	8841.73150	24	320
BT 40 / PG 15 x 360 XL	8841.73190	24	360
BT 40 / PG 15 x 400 XL	8841.73230	24	400
BT 40 / PG 25 x 226 XL	8841.76050	40	226
BT 40 / PG 25 x 326 XL	8841.76150	40	326

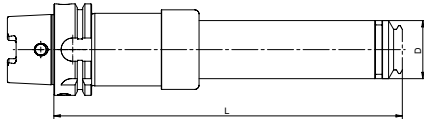
BT 50 / PG 10 x 240 XL	8851.71070	16	240
BT 50 / PG 10 x 260 XL	8851.71090	16	260
BT 50 / PG 10 x 300 XL	8851.71130	16	300
BT 50 / PG 10 x 340 XL	8851.71170	16	340
BT 50 / PG 10 x 360 XL	8851.71190	16	360
BT 50 / PG 10 x 400 XL	8851.71230	16	400
BT 50 / PG 15 x 240 XL	8851.73070	24	240
BT 50 / PG 15 x 260 XL	8851.73090	24	260
BT 50 / PG 15 x 300 XL	8851.73130	24	300
BT 50 / PG 15 x 340 XL	8851.73170	24	340
BT 50 / PG 15 x 360 XL	8851.73190	24	360
BT 50 / PG 15 x 400 XL	8851.73230	24	400
BT 50 / PG 25 x 240 XL	8851.76070	40	240
BT 50 / PG 25 x 340 XL	8851.76170	40	340



△REGO-FIX®  
△REGO-FIX®



Swiss  
Precision  
Tools



**HSK-A PG XL**  
**powRgrip® Colletholder**  
**DIN69893/ISO12164**

Type	Part no.	D [mm]	L [mm]
HSK-A 63 / PG 10 x 240 XL	8865.71070	16	240
HSK-A 63 / PG 10 x 260 XL	8865.71090	16	260
HSK-A 63 / PG 10 x 300 XL	8865.71130	16	300
HSK-A 63 / PG 10 x 340 XL	8865.71170	16	340
HSK-A 63 / PG 10 x 360 XL	8865.71190	16	360
HSK-A 63 / PG 10 x 400 XL	8865.71230	16	400
HSK-A 63 / PG 15 x 240 XL	8865.73070	24	240
HSK-A 63 / PG 15 x 260 XL	8865.73090	24	260
HSK-A 63 / PG 15 x 300 XL	8865.73130	24	300
HSK-A 63 / PG 15 x 340 XL	8865.73170	24	340
HSK-A 63 / PG 15 x 360 XL	8865.73190	24	360
HSK-A 63 / PG 15 x 400 XL	8865.73230	24	400
HSK-A 63 / PG 25 x 240 XL	8865.76070	40	240
HSK-A 63 / PG 25 x 260 XL	8865.76090	40	260
HSK-A 63 / PG 25 x 340 XL	8865.76170	40	340
HSK-A 63 / PG 25 x 360 XL	8865.76190	40	360

HSK-A 100 / PG 10 x 240 XL	8885.71070	16	240
HSK-A 100 / PG 10 x 300 XL	8885.71130	16	300
HSK-A 100 / PG 10 x 340 XL	8885.71170	16	340
HSK-A 100 / PG 10 x 400 XL	8885.71230	16	400
HSK-A 100 / PG 15 x 240 XL	8885.73070	24	240
HSK-A 100 / PG 15 x 300 XL	8885.73110	24	300
HSK-A 100 / PG 15 x 340 XL	8885.73170	24	340
HSK-A 100 / PG 15 x 400 XL	8885.73230	24	400
HSK-A 100 / PG 25 x 246 XL	8885.76070	40	246
HSK-A 100 / PG 25 x 346 XL	8885.76170	40	346



**REGO-FIX CAPTO PG XL**  
**powRgrip® Colletholder**  
**ISO26623**

Type	Part no.	D [mm]	L [mm]
C6 / PG 10 x 225 XL	8886.71050	16	225
C6 / PG 10 x 240 XL	8886.71070	16	240
C6 / PG 10 x 260 XL	8886.71090	16	260
C6 / PG 10 x 300 XL	8886.71130	16	300
C6 / PG 10 x 325 XL	8886.71150	16	325
C6 / PG 10 x 340 XL	8886.71170	16	340
C6 / PG 10 x 360 XL	8886.71190	16	360
C6 / PG 10 x 400 XL	8886.71230	16	400
C6 / PG 15 x 225 XL	8886.73050	24	225
C6 / PG 15 x 240 XL	8886.73070	24	240
C6 / PG 15 x 260 XL	8886.73090	24	260
C6 / PG 15 x 300 XL	8886.73130	24	300
C6 / PG 15 x 325 XL	8886.73150	24	325
C6 / PG 15 x 340 XL	8886.73170	24	340
C6 / PG 15 x 360 XL	8886.73190	24	360
C6 / PG 15 x 400 XL	8886.73230	24	400
C6 / PG 25 x 230 XL	8886.76060	40	230
C6 / PG 25 x 330 XL	8886.76160	40	330

C8 / PG 10 x 232 XL	8888.71060	16	232
C8 / PG 10 x 332 XL	8888.71160	16	332
C8 / PG 15 x 232 XL	8888.73060	24	232
C8 / PG 15 x 332 XL	8888.73160	24	332
C8 / PG25 x 230 XL	8888.76060	40	230
C8 / PG25 x 330 XL	8888.76160	40	330

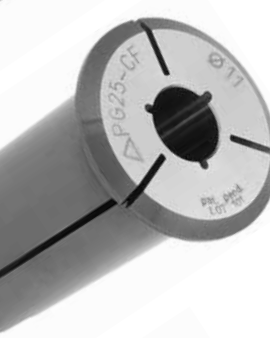
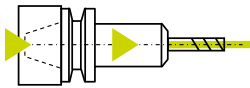
### Collets

#### powRgrip® Collet Types



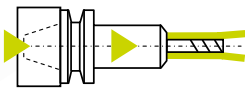
#### PG Standard (DIN6535)

- Metallically sealed
- For tools with an internal coolant supply



#### PG-CF Coolant Flush

- With cooling channels for peripheral cooling



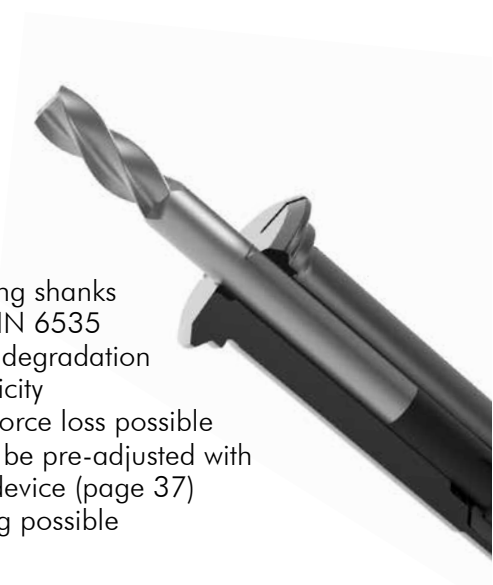
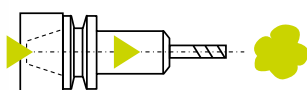
#### PG-MB Microbore

- For tool shanks  
Ø 0.2 – 1.5875 mm (1/16")



#### PG-MQL (on request)

- For minimum-quantity lubrication



#### PG-S Clamping shanks shorter than DIN 6535

- Hardly any degradation in concentricity
- Clamping force loss possible
- Length can be pre-adjusted with presetting device (page 37)
- Tool cooling possible



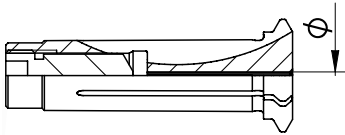
#### PG-L Clamping shanks longer than DIN 6535

- No clamping force loss
- No concentricity loss
- Tool cooling possible
- Without stop screw



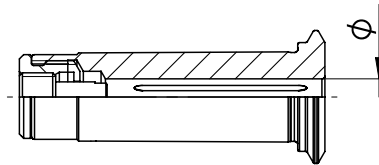
#### PG-T

- For turning applications
- With positioning screw



### PG-MB powRgrip® Collets with Microbore

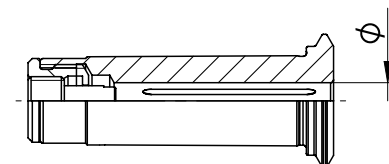
Type	Part no.	Ø [mm]	Ø [Inch]
PG 6-MB Ø 0.2 mm	1706.00209	0.200	–
PG 6-MB Ø 0.3 mm	1706.00309	0.300	–
PG 6-MB Ø 0.4 mm	1706.00409	0.400	–
PG 6-MB Ø 0.5 mm	1706.00509	0.500	–
PG 6-MB Ø 0.6 mm	1706.00609	0.600	–
PG 6-MB Ø 0.7 mm	1706.00709	0.700	–
PG 6-MB Ø 0.8 mm	1706.00809	0.800	–
PG 6-MB Ø 0.9 mm	1706.00909	0.900	–
PG 6-MB Ø 1.0 mm	1706.01009	1.000	–
PG 6-MB Ø 1.5 mm	1706.01509	1.500	–
PG 6-MB Ø 1/16"	1706.01599	1.588	1/16"
PG 10-MB Ø 0.2 mm	1710.00209	0.200	–
PG 10-MB Ø 0.3 mm	1710.00309	0.300	–
PG 10-MB Ø 0.4 mm	1710.00409	0.400	–
PG 10-MB Ø 0.5 mm	1710.00509	0.500	–
PG 10-MB Ø 0.6 mm	1710.00609	0.600	–
PG 10-MB Ø 0.7 mm	1710.00709	0.700	–
PG 10-MB Ø 0.8 mm	1710.00809	0.800	–
PG 10-MB Ø 0.9 mm	1710.00909	0.900	–
PG 10-MB Ø 1.0 mm	1710.01009	1.000	–
PG 10-MB Ø 1.5 mm	1710.01509	1.500	–
PG 10-MB Ø 1/16"	1710.01589	1.5875	1/16"



### PG powRgrip® Standard Collets

Type	Part no.	Ø [mm]	Ø [Inch]
PG 6 Ø 2.0 mm	1706.02000	2.000	–
PG 6 Ø 2.5 mm	1706.02500	2.500	–
PG 6 Ø 3.0 mm	1706.03000	3.000	–
PG 6 Ø 1/8"	1706.03181	3.175	1/8"
PG 10 Ø 2.0 mm	1710.02000	2.000	–
PG 10 Ø 2.5 mm	1710.02500	2.500	–
PG 10 Ø 3.0 mm	1710.03000	3.000	–
PG 10 Ø 1/8"	1710.03181	3.175	1/8"
PG 10 Ø 3.5 mm	1710.03500	3.500	–
PG 10 Ø 4.0 mm	1710.04000	4.000	–
PG 10 Ø 4.5 mm	1710.04500	4.500	–
PG 10 Ø 3/16"	1710.04761	4.763	3/16"
PG 10 Ø 5.0 mm	1710.05000	5.000	–
PG 10 Ø 5.5 mm	1710.05500	5.500	–
PG 10 Ø 6.0 mm	1710.06000	6.000	–
PG 10 Ø 1/4"	1710.06351	6.350	1/4"
PG 15 Ø 3.0 mm	1715.03000	3.000	–
PG 15 Ø 1/8"	1715.03181	3.175	1/8"
PG 15 Ø 3.5 mm	1715.03500	3.500	–
PG 15 Ø 4.0 mm	1715.04000	4.000	–
PG 15 Ø 4.5 mm	1715.04500	4.500	–
PG 15 Ø 3/16"	1715.04761	4.763	3/16"
PG 15 Ø 5.0 mm	1715.05000	5.000	–
PG 15 Ø 5.5 mm	1715.05500	5.500	–
PG 15 Ø 6.0 mm	1715.06000	6.000	–
PG 15 Ø 1/4"	1715.06351	6.350	1/4"
PG 15 Ø 7.0 mm	1715.07000	7.000	–
PG 15 Ø 5/16"	1715.07941	7.938	5/16"

### PG powRgrip® Standard Collets



Type	Part no.	Ø [mm]	Ø [Inch]
PG 15 Ø 8.0 mm	1715.08000	8.000	–
PG 15 Ø 9.0 mm	1715.09000	9.000	–
PG 15 Ø 3/8"	1715.09521	9.525	3/8"
PG 15 Ø 10.0 mm	1715.10000	10.000	–

PG 25 Ø 3.00 mm	1725.03000	3.000	–
PG 25 Ø 1/8"	1725.03181	3.175	1/8"
PG 25 Ø 3.50 mm	1725.03500	3.500	–
PG 25 Ø 4.00 mm	1725.04000	4.000	–
PG 25 Ø 4.50 mm	1725.04500	4.500	–
PG 25 Ø 3/16"	1725.04761	4.763	3/16"
PG 25 Ø 5.00 mm	1725.05000	5.000	–
PG 25 Ø 5.50 mm	1725.05500	5.500	–
PG 25 Ø 6.00 mm	1725.06000	6.000	–
PG 25 Ø 1/4"	1725.06351	6.350	1/4"
PG 25 Ø 7.00 mm	1725.07000	7.000	–
PG 25 Ø 5/16"	1725.07941	7.938	5/16"
PG 25 Ø 8.00 mm	1725.08000	8.000	–
PG 25 Ø 9.00 mm	1725.09000	9.000	–
PG 25 Ø 3/8"	1725.09521	9.525	3/8"
PG 25 Ø 10.00 mm	1725.10000	10.000	–
PG 25 Ø 11.00 mm	1725.11000	11.000	–
PG 25 Ø 7/16"	1725.11111	11.113	7/16"
PG 25 Ø 12.00 mm	1725.12000	12.000	–
PG 25 Ø 1/2"	1725.12701	12.700	1/2"
PG 25 Ø 13.00 mm	1725.13000	13.000	–
PG 25 Ø 14.00 mm	1725.14000	14.000	–
PG 25 Ø 9/16"	1725.14291	14.288	9/16"
PG 25 Ø 15.00 mm	1725.15000	15.000	–

Type	Part no.	Ø [mm]	Ø [Inch]
PG 25 Ø 5/8"	1725.15881	15.875	5/8"
PG 25 Ø 16.00 mm	1725.16000	16.000	–
PG 25 Ø 18.00 mm	1725.18000	18.000	–
PG 25 Ø 3/4"	1725.19051	19.050	3/4"
PG 25 Ø 20.00 mm	1725.20000	20.000	–

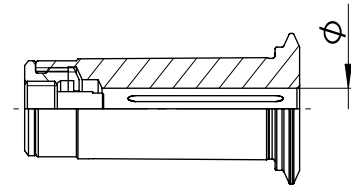
PG 32 Ø 6.0 mm	1732.06000	6.000	–
PG 32 Ø 1/4"	1732.06351	6.350	1/4"
PG 32 Ø 7.0 mm	1732.07000	7.000	–
PG 32 Ø 5/16"	1732.07941	7.938	5/16"
PG 32 Ø 8.0 mm	1732.08000	8.000	–
PG 32 Ø 9.0 mm	1732.09000	9.000	–
PG 32 Ø 3/8"	1732.09521	9.525	3/8"
PG 32 Ø 10.0 mm	1732.10000	10.000	–
PG 32 Ø 11.0 mm	1732.11000	11.000	–
PG 32 Ø 7/16"	1732.11111	11.113	7/16"
PG 32 Ø 12.0 mm	1732.12000	12.000	–
PG 32 Ø 1/2"	1732.12701	12.700	1/2"
PG 32 Ø 14.0 mm	1732.14000	14.000	–
PG 32 Ø 9/16"	1732.14291	14.288	9/16"
PG 32 Ø 5/8"	1732.15881	15.875	5/8"
PG 32 Ø 16.0 mm	1732.16000	16.000	–
PG 32 Ø 18.0 mm	1732.18000	18.000	–
PG 32 Ø 3/4"	1732.19051	19.050	3/4"
PG 32 Ø 20.0 mm	1732.20000	20.000	–
PG 32 Ø 22.0 mm	1732.22000	22.000	–
PG 32 Ø 7/8"	1732.22231	22.225	7/8"
PG 32 Ø 25.0 mm	1732.25000	25.000	–
PG 32 Ø 1"	1732.25401	25.400	1"

REGO-FIX®  
 Swiss Line  
 pat. pend.  
 40/P/G25x080 H  
 40.72540.02



Swiss  
 Precision  
 Tools

## PG-CF powRgrip® Collets with Cooling Channels



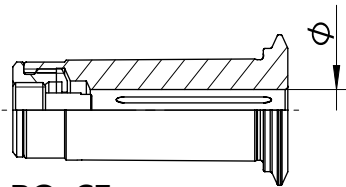
Type	Part no.	Ø [mm]	Ø [Inch]
PG 10-CF Ø 2.0 mm	1710.02002	2.000	–
PG 10-CF Ø 3.0 mm	1710.03002	3.000	–
PG 10-CF Ø 1/8"	1710.03183	3.175	1/8"
PG 10-CF Ø 4.0 mm	1710.04002	4.000	–
PG 10-CF Ø 3/16"	1710.04763	4.763	3/16"
PG 10-CF Ø 5.0 mm	1710.05002	5.000	–
PG 10-CF Ø 6.0 mm	1710.06002	6.000	–
PG 10-CF Ø 1/4"	1710.06353	6.350	1/4"

PG 15-CF Ø 3.0 mm	1715.03002	3.000	–
PG 15-CF Ø 1/8"	1715.03183	3.175	1/8"
PG 15-CF Ø 4.0 mm	1715.04002	4.000	–
PG 15-CF Ø 3/16"	1715.04763	4.763	3/16"
PG 15-CF Ø 5.0 mm	1715.05002	5.000	–
PG 15-CF Ø 6.0 mm	1715.06002	6.000	–
PG 15-CF Ø 1/4"	1715.06353	6.350	1/4"
PG 15-CF Ø 7.0 mm	1715.07002	7.000	–
PG 15-CF Ø 5/16"	1715.07943	7.938	5/16"
PG 15-CF Ø 8.0 mm	1715.08002	8.000	–
PG 15-CF Ø 9.0 mm	1715.09002	9.000	–
PG 15-CF Ø 3/8"	1715.09523	9.525	3/8"
PG 15-CF Ø 10.0 mm	1715.10002	10.000	–

PG 25-CF Ø 3.0 mm	1725.03002	3.000	–
PG 25-CF Ø 1/8"	1725.03183	3.175	1/8"
PG 25-CF Ø 4.0 mm	1725.04002	4.000	–
PG 25-CF Ø 3/16"	1725.04763	4.763	3/16"
PG 25-CF Ø 5.0 mm	1725.05002	5.000	–
PG 25-CF Ø 6.0 mm	1725.06002	6.000	–
PG 25-CF Ø 1/4"	1725.06353	6.350	1/4"
PG 25-CF Ø 7.0 mm	1725.07002	7.000	–
PG 25-CF Ø 5/16"	1725.07943	7.938	5/16"

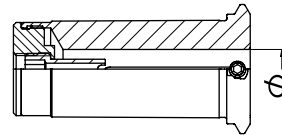
Type	Part no.	Ø [mm]	Ø [Inch]
PG 25-CF Ø 8.00 mm	1725.08002	8.000	–
PG 25-CF Ø 9.00 mm	1725.09002	9.000	–
PG 25-CF Ø 3/8"	1725.09523	9.525	3/8"
PG 25-CF Ø 10.00 mm	1725.10002	10.000	–
PG 25-CF Ø 11.00 mm	1725.11002	11.000	–
PG 25-CF Ø 7/16"	1725.11113	11.113	7/16"
PG 25-CF Ø 12.00 mm	1725.12002	12.000	–
PG 25-CF Ø 1/2"	1725.12703	12.700	1/2"
PG 25-CF Ø 13.00 mm	1725.13002	13.000	–
PG 25-CF Ø 14.00 mm	1725.14002	14.000	–
PG 25-CF Ø 9/16"	1725.14293	14.288	9/16"
PG 25-CF Ø 15.00 mm	1725.15002	15.000	–
PG 25-CF Ø 5/8"	1725.15883	15.875	5/8"
PG 25-CF Ø 16.00 mm	1725.16002	16.000	–
PG 25-CF Ø 18.00 mm	1725.18002	18.000	–
PG 25-CF Ø 3/4"	1725.19053	19.050	3/4"
PG 25-CF Ø 20.00 mm	1725.20002	20.000	–

PG 32-CF Ø 6.0 mm	1732.06002	6.000	–
PG 32-CF Ø 1/4"	1732.06353	6.350	1/4"
PG 32-CF Ø 7.0 mm	1732.07002	7.000	–
PG 32-CF Ø 5/16"	1732.07943	7.938	5/16"
PG 32-CF Ø 8.0 mm	1732.08002	8.000	–
PG 32-CF Ø 9.0 mm	1732.09002	9.000	–
PG 32-CF Ø 3/8"	1732.09523	9.525	3/8"
PG 32-CF Ø 10.0 mm	1732.10002	10.000	–
PG 32-CF Ø 11.0 mm	1732.11002	11.000	–
PG 32-CF Ø 7/16"	1732.11113	11.113	7/16"
PG 32-CF Ø 12.0 mm	1732.12002	12.000	–
PG 32-CF Ø 1/2"	1732.12703	12.700	1/2"
PG 32-CF Ø 14.0 mm	1732.14002	14.000	–
PG 32-CF Ø 9/16"	1732.14293	14.288	9/16"



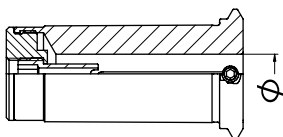
**PG-CF**  
powRgrip® Collets  
with Cooling Channels

Type	Part no.	Ø [mm]	Ø [Inch]
PG 32-CF Ø 5/8"	1732.15883	15.875	5/8"
PG 32-CF Ø 16.00 mm	1732.16002	16.000	–
PG 32-CF Ø 18.00 mm	1732.18002	18.000	–
PG 32-CF Ø 3/4"	1732.19053	19.050	3/4"
PG 32-CF Ø 20.00 mm	1732.20002	20.000	–
PG 32-CF Ø 22.00 mm	1732.22002	22.000	–
PG 32-CF Ø 7/8"	1732.22233	22.225	7/8"
PG 32-CF Ø 25.00 mm	1732.25002	25.000	–
PG 32-CF Ø 1"	1732.25403	25.400	1"



**PG-T**  
powRgrip® Collets  
for Turning Applications

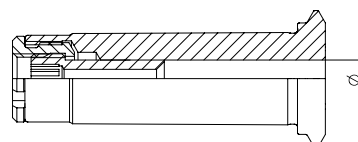
Type	Part no.	Ø [mm]	Ø [Inch]
PG 25-T Ø 10.0 mm	1725.10007	10.000	–
PG 25-T Ø 12.0 mm	1725.12007	12.000	–
PG 25-T Ø 1/2"	1725.12707	12.700	1/2"
PG 25-T Ø 16.00 mm	1725.16007	16.000	–
PG 25-T Ø 3/4"	1725.19057	19.050	3/4"
PG 25-T Ø 20.0 mm	1725.20007	20.000	–
TORX T 6 for PG-T 15	Torx wrench for setting the turning tool.		
TORX T 8 for PG-T 25			



**PG-T**  
powRgrip® Collets  
for Turning Applications

Type	Part no.	Ø [mm]	Ø [Inch]
PG 15-T Ø 5.0 mm	1715.05007	5.000	–
PG 15-T Ø 6.0 mm	1715.06007	6.000	–
PG 15-T Ø 1/4"	1715.06357	6.350	1/4"
PG 15-T Ø 8.0 mm	1715.08007	8.000	–
PG 15-T Ø 3/8"	1715.09537	9.525	3/8"
PG 15-T Ø 10.0 mm	1715.10007	10.000	–

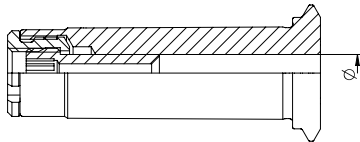
PG 25-T Ø 5.0 mm	1725.05007	5.000	–
PG 25-T Ø 6.0 mm	1725.06007	6.000	–
PG 25-T Ø 1/4"	1725.06357	6.350	1/4"
PG 25-T Ø 8.0 mm	1725.08007	8.000	–
PG 25-T Ø 3/8"	1725.09537	9.525	3/8"



**PG-S**  
powRgrip® Collets  
for Short Tool Shanks

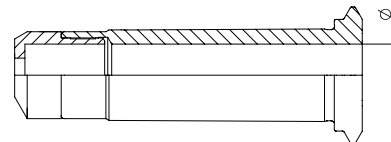
Type	Part no.	Ø [mm]	Ø [Inch]
PG 6-S Ø 3.00 mm	1706.03008	3.000	–
PG 6-S Ø 1/8"	1706.03188	3.175	1/8"
PG 10-S Ø 3.00 mm	1710.03008	3.000	–
PG 10-S Ø 1/8"	1710.03188	3.175	1/8"
PG 10-S Ø 4.00 mm	1710.04008	4.000	–
PG 10-S Ø 3/16"	1710.04768	4.763	3/16"
PG 10-S Ø 1/4"	1710.06358	6.350	1/4"

PG 15-S Ø 1/8"	1715.03188	3.175	1/8"
PG 15-S Ø 4.00 mm	1715.04008	4.000	–
PG 15-S Ø 3/16"	1715.04768	4.763	3/16"
PG 15-S Ø 5.00 mm	1715.05008	5.000	–



**PG-S**  
**powRgrip® Collets**  
**for Short Tool Shanks**

Type	Part no.	Ø [mm]	Ø [Inch]
PG 15-S Ø 6.0 mm	1715.06008	6.000	–
PG 15-S Ø 1/4"	1715.06358	6.350	1/4"
PG 15-S Ø 5/16"	1715.07948	7.940	5/16"
PG 15-S Ø 8.0 mm	1715.08008	8.000	–
PG 15-S Ø 3/8"	1715.09528	9.520	3/8"
PG 15-S Ø 10 mm	1715.10008	10.000	–
PG 25-S Ø 1/8"	1725.03188	3.175	1/8"
PG 25-S Ø 4.00 mm	1725.04008	4.000	–
PG 25-S Ø 3/16"	1725.04768	4.763	3/16"
PG 25-S Ø 6.00 mm	1725.06008	6.000	–
PG 25-S Ø 1/4"	1725.06358	6.358	1/4"
PG 25-S Ø 5/16"	1725.07948	7.940	5/16"
PG 25-S Ø 8.0 mm	1725.08008	8.000	–
PG 25-S Ø 3/8"	1725.09528	9.520	3/8"
PG 25-S Ø 10.0 mm	1725.10008	10.000	–
PG 25-S Ø 12.0 mm	1725.12008	12.000	–
PG 25-S Ø 1/2"	1725.12708	12.700	1/2"
PG 25-S Ø 14.0 mm	1725.14008	14.000	–
PG 25-S Ø 5/8"	1725.15888	15.880	5/8"
PG 25-S Ø 16.0 mm	1725.16008	16.000	–
PG 25-S Ø 3/4"	1725.19058	19.050	3/4"
PG 25-S Ø 20 mm	1725.20008	20.000	–
PG 32-S Ø 12.0 mm	1732.12008	12.000	–
PG 32-S Ø 1/2"	1732.12708	12.700	1/2"
PG 32-S Ø 16.0 mm	1732.16008	16.000	–
PG 32-S Ø 3/4"	1732.19058	19.050	3/4"
PG 32-S Ø 20.0 mm	1732.20008	20.000	–
PG 32-S Ø 25.0 mm	1732.25008	25.000	–
PG 32-S Ø 1"	1732.25408	25.400	1"



**PG-L**  
**powRgrip® Collets**  
**for Long Tool Shanks**

Type	Part no.	Ø [mm]	Ø [Inch]
PG 15-L Ø 4.0 mm	1715.04001	4.000	–
PG 15-L Ø 5.0 mm	1715.05001	5.000	–
PG 15-L Ø 6.0 mm	1715.06001	6.000	–
PG 15-L Ø 1/4"	1715.06350	6.350	1/4"
PG 15-L Ø 5/16"	1715.07940	7.940	5/16"
PG 15-L Ø 8.0 mm	1715.08001	8.000	–
PG 15-L Ø 3/8"	1715.09520	9.520	3/8"
PG 15-L Ø 10.0 mm	1715.10001	10.000	–
PG 25-L Ø 6.0 mm	1725.06001	6.000	–
PG 25-L Ø 1/4"	1725.06350	6.350	1/4"
PG 25-L Ø 5/16"	1725.07940	7.940	5/16"
PG 25-L Ø 8.00 mm	1725.08001	8.000	–
PG 25-L Ø 3/8"	1725.09520	9.520	3/8"
PG 25-L Ø 10.0 mm	1725.10001	10.000	–
PG 25-L Ø 12.0 mm	1725.12001	12.000	–
PG 25-L Ø 1/2"	1725.12700	12.700	1/2"
PG 25-L Ø 14.0 mm	1725.14001	14.000	–
PG 25-L Ø 5/8"	1725.15880	15.880	5/8"
PG 25-L Ø 16.0 mm	1725.16001	16.000	–
PG 25-L Ø 3/4"	1725.19050	19.050	3/4"
PG 25-L Ø 20.0 mm	1725.20001	20.000	–
PG 32-L Ø 12.0 mm	1732.12001	12.000	–
PG 32-L Ø 1/2"	1732.12700	12.700	1/2"
PG 32-L Ø 16.0 mm	1732.16001	16.000	–
PG 32-L Ø 3/4"	1732.19050	19.050	3/4"
PG 32-L Ø 20.0 mm	1732.20001	20.000	–
PG 32-L Ø 25.0 mm	1732.25001	25.000	–
PG 32-L Ø 1"	1732.25400	25.400	1"

### Thread Cutting powRgrip® Tapping Holder Types



#### SSY/PG Softsynchro® Tapping Holder

- With minimum length compensation
- Eliminates small synchronization errors of the machines



#### GSF/PG Tapping Holder

- With length compensation
- For machines without a tapping option

### SSY/PG powRgrip® Softsynchro® Tapping Holder

#### Applications:

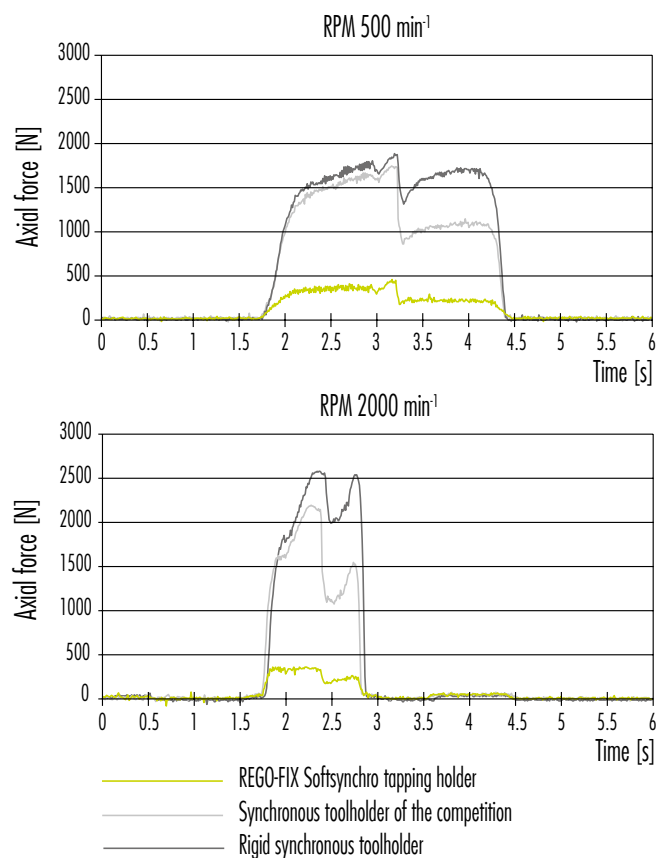
##### Machines for direct thread cutting

- The turning movement of the spindles can be offset with the feed axis and thus synchronized.
- Synchronization errors are created by the dynamics of the spindle and linear drives. The tapping holder is equipped with the minimum length compensation and compensates the synchronization errors.
- Depending on the application, the service life for the customer can be increased by up to 150%.

#### Comparative test

- Axial forces occur with thread forms M10 in St37

**Summary:** The axial forces increase with increasing speed. With a rigid toolholder, the forces occurring when forming threads are considerably higher than with the powRgrip® Softsynchro® tapping holder. This allows for the optimum use of the synchronous spindle with the best possible service life and thread surface quality.

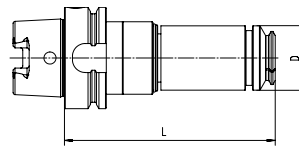




## GSF/PG powRgrip® Tapping Holder with Length Compensation

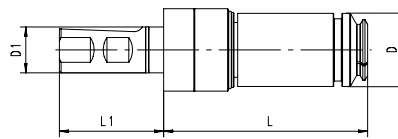
**Applications: They are used on machines in which the feed movement is not synchronized with the thread pitch during processing**

- Ensures the compensation of differences between the thread pitch and spindle feed
- Features a pressure-point mechanism
- Safe tap cutting
- Uniform, reproducible thread depths
- Guides coolant with up to 50 bar of pressure to the tap, without compromising length compensation
- Universal use thanks to its compact design and low gauge length



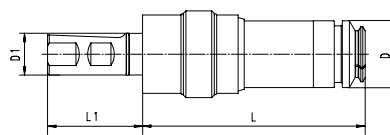
### HSK-A SSY/PG Softsynchro® Tapping Holder

Type	Part no.	D [mm]	L [mm]	Compression [mm]	Tension [mm]
HSK-A 63 SSY / PG 15	2563.61507	24	114.5	0.5	0.5
HSK-A 63 SSY / PG 25	2563.62507	40	131	0.5	0.5



### CYL SSY/PG Softsynchro® Tapping Holder

Type	Part no.	D [mm]	D1 [mm]	L [mm]	L1 [mm]	Compression [mm]	Tension [mm]
CYL 25 SSY / PG 15	2625.61507	24	25	92	57	0.5	0.5
CYL 25 SSY / PG 25	2625.62507	40	25	109.5	57	0.5	0.5



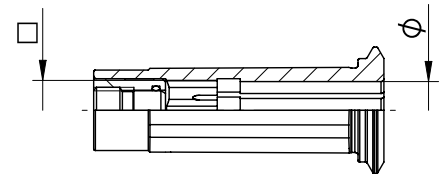
### CYL GSF/PG Tapping Holder with Length Compensation

Type	Part no.	D [mm]	D1 [mm]	L [mm]	L1 [mm]	Compression [mm]	Tension [mm]
CYL 25 GSF / PG 15	2625.61508	24	25	99.5	57	5.0	7.5
CYL 25 GSF / PG 25	2625.62508	40	25	134	57	7.0	10.0

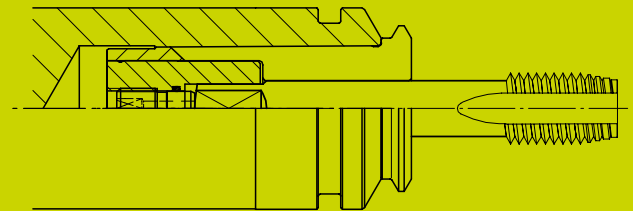


### Thread Cutting

#### PG-TAP powRgrip® Tapping Collets



- For taps according to DIN standards
- Without length compensation
- With inner square
- Integrated setting screw
- Metallically sealed (internal cooling lubricant supply)
- Tool shanks in h9 tolerance



#### Applications: Machines for direct thread cutting

- Spindle speed and feed are matched with each other
- Colletholder with length compensation for compensating feed differences is only required to a limited extent

#### PG-TAP powRgrip® Tapping Collets

Type	Part no.	Ø [mm]	□ [mm]	DIN standard
PG 15-TAP Ø 3.5 mm	1715.03505	3,500	2,700	371/376
PG 15-TAP Ø 4.5 mm	1715.04505	4,500	3,400	371/376
PG 15-TAP Ø 6.0 mm	1715.06005	6,000	4,900	371/376
PG 15-TAP Ø 7.0 mm	1715.07005	7,000	5,500	371/376
PG 15-TAP Ø 8.0 mm	1715.08005	8,000	6,200	371/376
PG 15-TAP Ø 9.0 mm	1715.09005	9,000	7,000	371/376
PG 15-TAP Ø 10.0 mm	1715.10005	10,000	8,000	371

PG 25-TAP Ø 6.0 mm	1725.06005	6,000	4,900	371/376
PG 25-TAP Ø 8.0 mm	1725.08005	8,000	6,200	371/376
PG 25-TAP Ø 9.0 mm	1725.09005	9,000	7,000	371/376
PG 25-TAP Ø 10.0 mm	1725.10005	10,000	8,000	371
PG 25-TAP Ø 11.0 mm	1725.11005	11,000	9,000	371/376
PG 25-TAP Ø 12.0 mm	1725.12005	12,000	9,000	371/376
PG 25-TAP Ø 14.0 mm	1725.14005	14,000	11,000	371/376
PG 25-TAP Ø 16.0 mm	1725.16005	16,000	12,000	371/376





# secuRgrip®

## Security Against Tool Pull-out

**secuRgrip® – The Solution for Challenging Machining**

In high performance cutting (HPC), the tool can pull out of the clamping system during the milling operation and damage the workpiece.

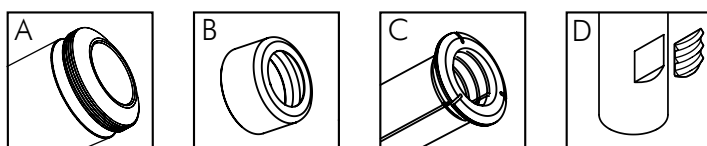
REGO-FIX® developed the **secuRgrip® locking system** for operators who want to be completely certain that no tools are pulled out.

### Features of secuRgrip®

- Tools and collets are completely (100%) secured against pull-out
- Standard tools with endmill flat according to DIN 6535-HB (metric)
- No special tool shank forms required
- secuRgrip® is the option for a form and force-fitting clamping system
- Higher productivity by security of process - higher material remove rate
- One-time investment for the secuRgrip® system – in contrast to repetitive costs for other systems

### secuRgrip® System Elements

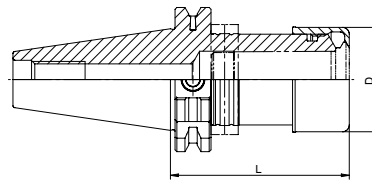
- A: secuRgrip® toolholder with thread  
 B: secuRgrip® safety nut  
 C: secuRgrip® PG 25-SG or PG 32-SG collet  
 D: secuRgrip® thread insert for shanks with Weldon surface according to DIN 6535-HB



Other tools required:  
 Freewheel wrench head and grip bar or torque wrench required.

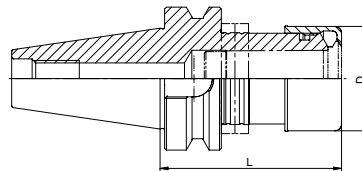
### TC PG-SG secuRip® Colletholder DIN 69871

Type	Form A + AD Part no.	D [mm]	L [mm]	Balancing rings
TC 40 / PG 25-SG x 080 H	5240.72540	46	80	FWR 405
TC 40 / PG 25-SG x 120 H	5240.72560	46	120	FWR 405
TC 40 / PG 25-SG x 160 H	5240.72580	46	160	FWR 405/405
TC 40 / PG 32-SG x 080	5240.73240	55	80	–
TC 50 / PG 32-SG x 080	5250.73240	55	80	–



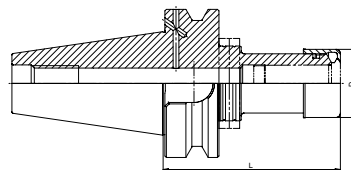
### BT PG-SG secuRip® Colletholder MAS 403

Type	Form A + AD Part no.	D [mm]	L [mm]	Balancing rings
BT 40 / PG 25-SG x 080 H	5140.72540	46	80	FWR 405
BT 40 / PG 25-SG x 120 H	5140.72560	46	120	FWR 405
BT 40 / PG 32-SG x 086	5140.73240	55	86	–
BT 50 / PG 25-SG x 100	5150.72550	46	100	–
BT 50 / PG 25-SG x 120 H	5150.72560	46	120	FWR 505
BT 50 / PG 32-SG x 100	5150.73250	55	100	–



### BT+ REGO PLUS PG-SG secuRip® Colletholder BIG-PLUS SYSTEM – Licensed by BIG Daishowa

Type	Form A + AD Part no.	D [mm]	L [mm]	Balancing rings
BT+ 50 / PG 25-SG x 120 H	5150.72566	46	120	FWR 505/405

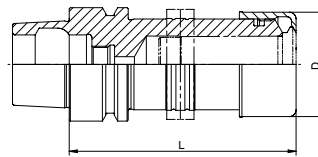




## HSK-A PG-SG secuRgrip® Colletholder DIN 69893/ISO12164

Type	Part no.	D [mm]	L [mm]	Balancing rings
HSK-A 63 / PG 25-SG x 100 H	5563.72550	46	100	FWR 405
HSK-A 63 / PG 25-SG x 120 H	5563.72560	46	120	FWR 405
HSK-A 63 / PG 25-SG x 160 H	5563.72580	46	160	FWR 405/405
HSK-A 63 / PG 25-SG x 200 H	5563.72590	46	200	FWR 405/405
HSK-A 63 / PG 32-SG x 100	5563.73250	55	100	—
HSK-A 63 / PG 32-SG x 120 H	5563.73260	55	120	FWR 505
HSK-A 80 / PG 32-SG x 105 H	5580.73250	55	105	FWR 505
HSK-A 100 / PG 25-SG x 100 H	5500.72550	46	100	FWR 505
HSK-A 100 / PG 25-SG x 160 H	5500.72580	46	160	FWR 505/405
HSK-A 100 / PG 25-SG x 200 H	5500.72590	46	200	FWR 505/405
HSK-A 100 / PG 32-SG x 106 H	5500.73250	55	106	FWR 505
HSK-A 100 / PG 32-SG x 160 H	5500.73280	55	160	FWR 505
HSK-A 100 / PG 32-SG x 200 H	5500.73290	55	200	FWR 505/505

HSK-A 125 on demand

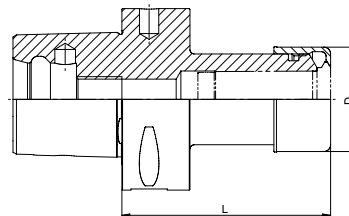


## REGO-FIX CAPTO PG-SG secuRgrip® Colletholder ISO26623

Type	Form A + AD Part no.	D [mm]	L [mm]	Balancing rings
C8 / PG 25-SG x 092	5808.72540	46	92	—
C8 / PG 32-SG x 090	5808.73240	55	90	—

Scope of delivery: secuRgrip® colletholder, including secuRgrip® safety nut.

Additional lengths and interfaces available on request.



### PG-SG secuRgrip® Threaded Inserts

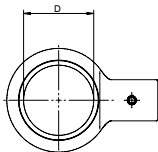


Type	Part no.	Description
SGI Ø 12 mm	7694.12000	secuRgrip® threaded insert Ø 12.00 mm
SGI Ø 14 mm	7694.14000	secuRgrip® threaded insert Ø 14.00 mm
SGI Ø 16 mm	7694.16000	secuRgrip® threaded insert Ø 16.00 mm
SGI Ø 18 mm	7694.18000	secuRgrip® threaded insert Ø 18.00 mm
SGI Ø 20 mm	7694.20000	secuRgrip® threaded insert Ø 20.00 mm
SGI Ø 25 mm	7694.25000	secuRgrip® threaded insert Ø 25.00 mm
SGI Ø 1/2"	7694.12700	secuRgrip® threaded insert Ø 1/2"
SGI Ø 5/8"	7694.15880	secuRgrip® threaded insert Ø 5/8"
SGI Ø 3/4"	7694.19050	secuRgrip® threaded insert Ø 3/4"
SGI Ø 1"	7694.25400	secuRgrip® threaded insert Ø 1"

secuRgrip® threaded inserts for shanks according to DIN 6535-HB.

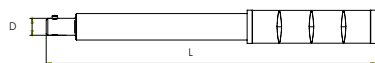
### PG-SG secuRgrip® Freewheel Wrench Head

Type	Part no.	D [mm]
A-FLS Ø 46 / SG 25	7655.25000	46
A-FLS Ø 55 / SG 32	7655.32000	55



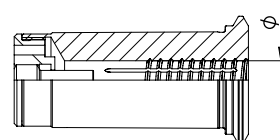
A torque wrench or a grip bar is required.

### G-A Grip Bar for Wrench Head



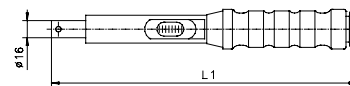
Type	Part no.	L1 [mm]	D [mm]
G-A	7655.99900	308	16

### PG-SG secuRgrip® Collets



Type	Part no.	Ø [mm]	Ø [Inch]
PG 25-SG Ø 12.00 mm	1725.12004	12,000	–
PG 25-SG Ø 1/2"	1725.12704	12,700	1/2"
PG 25-SG Ø 14.00 mm	1725.14004	14,000	–
PG 25-SG Ø 5/8"	1725.15884	15,875	5/8"
PG 25-SG Ø 16.00 mm	1725.16004	16,000	–
PG 25-SG Ø 18.00 mm	1725.18004	18,000	–
PG 25-SG Ø 3/4"	1725.19054	19,050	3/4"
PG 25-SG Ø 20.00 mm	1725.20004	20,000	–
PG 32-SG Ø 12.00 mm	1732.12004	12,000	–
PG 32-SG Ø 1/2"	1732.12704	12,700	1/2"
PG 32-SG Ø 14.00 mm	1732.14004	14,000	–
PG 32-SG Ø 5/8"	1732.15884	15,875	5/8"
PG 32-SG Ø 16.00 mm	1732.16004	16,000	–
PG 32-SG Ø 18.00 mm	1732.18004	18,000	–
PG 32-SG Ø 3/4"	1732.19054	19,050	3/4"
PG 32-SG Ø 20.00 mm	1732.20004	20,000	–
PG 32-SG Ø 25.00 mm	1732.25004	25,000	–
PG 32-SG Ø 1"	1732.25404	25,400	1"

### TORCO-FIX Torque Wrench



Type	Part no.	L1 [mm]	Range [Nm]
TORCO-FIX II	7150.20200	465	20-2000

REGO-FIX® recommends using a TORCO-FIX torque wrench.



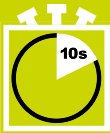
# Automatic Clamping Unit PGU 9500

powRgrip® Clamp/Unclamp in seconds without heating!



### Clamp/Unclamp

Clamp tools with maximum **clamping force and precise runout** in the powRgrip® collet and colletholder.



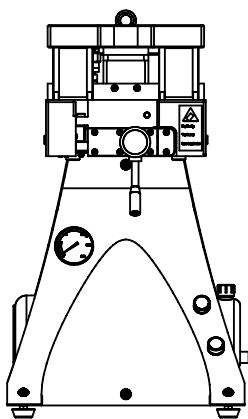
### Within a few seconds

Clamp the tool safely and securely by **pushing just one button**. The clamping will take **less than 10 seconds, without the use of heat**.



### Smart System - no setting of parameters required

Clamping pressure is controlled by the insertion of the respective clamping insert (APG). There are five clamping inserts (APG) available for the clamping of different diameters.



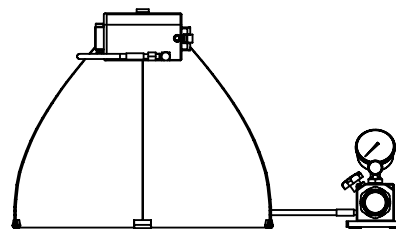
**PGU**  
automatic  
clamping unit

### APG clamping insert

- PG6
- PG10
- PG15
- PG25
- PG32



change  
APG

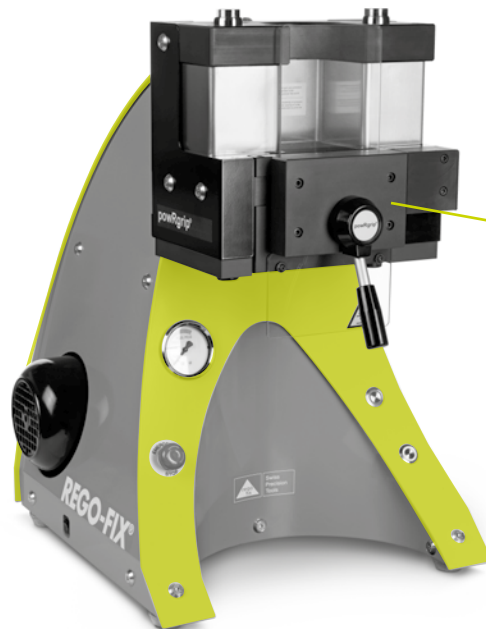


**PGC**  
manual  
clamping unit

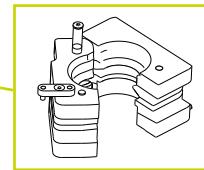
### APC clamping insert

- PG6
- PG10
- PG15
- PG25

**PGU9500  
Improved  
Design**



**Insert APG**



### powRgrip® PGU 9500 Automatic Clamping Unit

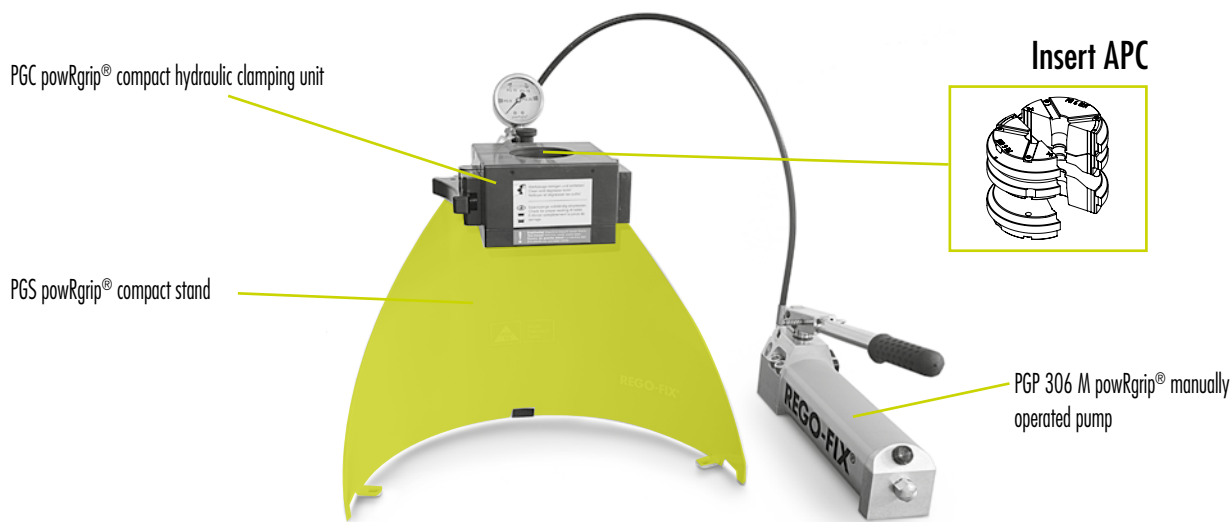
Type	Part no.	Dimensions (w x d x h)	Weight	Description
PGU 9500 E	7610.95000	454 x 555 x 648 mm	87 kg	powRgrip® clamping unit, system voltage 230 V, 50 Hz

PGU scope of delivery: Clamping insert APG not included.

Typ	Part no.	Dimensions (w x d x h)	Weight	Description
APG 906	7611.06900	100 x 095 x 080 mm	3 kg	Clamping insert PG 6 to PGU 9006 / 9500
APG 910	7611.10900	100 x 095 x 080 mm	3 kg	Clamping insert PG 10 to PGU 9000 / 9006 / 9500
APG 915	7611.15900	100 x 095 x 080 mm	3 kg	Clamping insert PG 15 to PGU 9000 / 9006 / 9500
APG 925	7611.25900	100 x 095 x 080 mm	3 kg	Clamping insert PG 25 to PGU 9000 / 9006 / 9500
APG 932	7611.32900	100 x 095 x 080 mm	3 kg	Clamping insert PG 32 to PGU 9000 / 9006 / 9500

APG scope of delivery: Clamping insert, taper cleaner and cleaning paper set.





## powRgrip® PGU Manual Clamping Unit

Type	Part no.	Masse (w x d x h)	Weight	Description
SET PGC 2506	7621.25069	578 x 420 x 438 mm	18.2 kg	powRgrip® Compact - manual clamping unit clamping unit, hand pump and stand

PGC scope of delivery: Clamping insert APC not included.

Type	Part no.	Dimensions	Weight	Description
APC 6	7622.06000	∅ 30 x 60 mm	0.8 kg	Clamping insert PG 6 to SET PGC 2506
APC 10	7622.10000	∅ 30 x 60 mm	0.8 kg	Clamping insert PG 10 to SET PGC 2506 / 2510
APC 15	7622.15000	∅ 30 x 60 mm	0.8 kg	Clamping insert PG 15 to SET PGC 2506 / 2510
APC 25	7622.25000	∅ 30 x 60 mm	0.8 kg	Clamping insert PG 25 to SET PGC 2506 / 2510

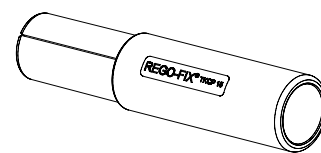
APC scope of delivery: Clamping insert, taper cleaner and cleaning paper set.

### Taper Cleaner

Provides a quick and thorough method for cleaning the powRgrip® colletholder before the collet is inserted.

Type	Part no.	Description
TKCP 6	7657.06000	taper cleaner for the PG 6 colletholder
TKCP 10	7657.10000	taper cleaner for the PG 10 colletholder
TKCP 15	7657.15000	taper cleaner for the PG 15 colletholder
TKCP 25	7657.25000	taper cleaner for the PG 25 colletholder
TKCP 32	7657.32000	taper cleaner for the PG 32 colletholder

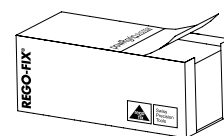
Scope of delivery: Taper cleaner and cleaning paper set.



### Cleaning Paper Set

An absorbent paper specially prepared for cleaning the powRgrip® colletholder. The paper is lint-free and does not contain any chemicals. For single use only!

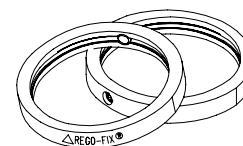
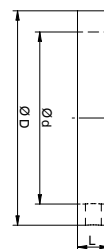
Type	Part no.	Description
CPS 6	7658.06000	cleaning paper set for taper cleaner TKCP 6 / each pack contains 250 sheets
CPS 10	7658.10000	cleaning paper set for taper cleaner TKCP 10 / each pack contains 250 sheets
CPS 15	7658.15000	cleaning paper set for taper cleaner TKCP 15 / each pack contains 250 sheets
CPS 25	7658.25000	cleaning paper set for taper cleaner TKCP 25 / each pack contains 250 sheets
CPS 32	7658.32000	cleaning paper set for taper cleaner TKCP 32 / each pack contains 250 sheets



### Hi-Q® Balancing Rings

Suitable for the powRgrip® colletholder with the part number containing the description "H".

Type	Part no.	D [mm]	d [mm]	L [mm]	Balancing capacity per single FWR ring (1 piece) [gmm]	Balancing capacity per FWR set (2 pieces) [gmm]	Maximum speed [min <sup>-1</sup> ]
SET FWR 225	7490.22500	30	22	6	8	16	80 000
SET FWR 285	7490.28500	36	28	6	16	32	70 000
SET FWR 325	7490.32500	40	32	6	22	44	60 000
SET FWR 405	7490.40500	48	40	6	26	52	50 000
SET FWR 505	7490.50500	60	50	7	65	130	42 000

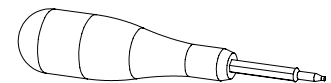




## Torque Screwdriver

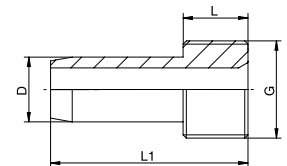
The torque screwdriver allows you to tighten the adjustment screw of the fine balancing ring with the recommended torque of 0.9 Nm.

Type	Part no.	Description
TSD 0.9 Nm	7159.09000	TORX 8 for balancing rings



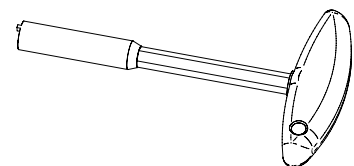
## KSR Coolant Tubes

Type	Part no.	D [mm]	L [mm]	L1 [mm]	G
KSR 25	7211.25000	5	4.5	17	M8 x 1.00
KSR 32	7211.32000	6	5.5	25.7	M10 x 1.00
KSR 40	7211.40000	8	7.5	29.2	M12 x 1.00
KSR 50	7211.50000	10	9.5	32.7	M16 x 1.00
KSR 63	7211.63000	12	11.5	36.2	M18 x 1.00
KSR 80	7211.80000	14	13.5	39.7	M20 x 1.50
KSR 100	7211.00000	16	15.5	43.6	M24 x 1.50



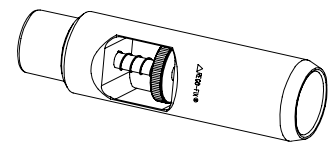
## SKR Key for Coolant Tubes

Type	Part no.	HSK Type
SKR 25	7212.25000	HSK 25
SKR 32	7212.32000	HSK 32
SKR 40	7212.40000	HSK 40
SKR 50	7212.50000	HSK 50
SKR 63	7212.63000	HSK 63
SKR 80	7212.80000	HSK 80
SKR 100	7212.00000	HSK 100



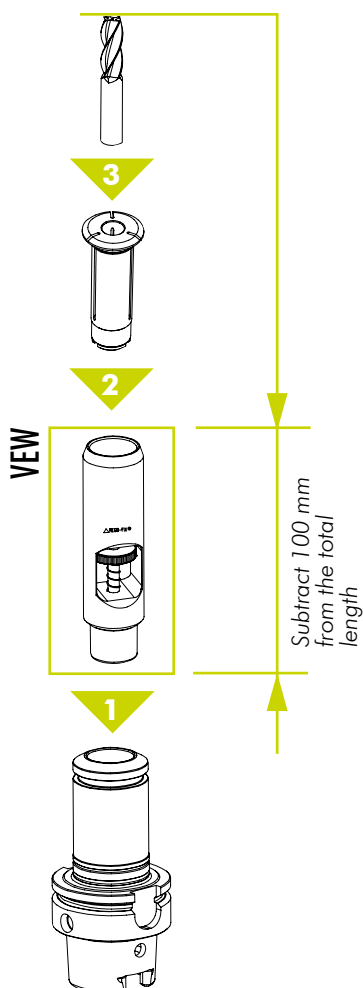
### Length Presetting Tool

The powRgrip® presetting tool accommodates the powRgrip® collet and is inserted into the collehlder. The presetting tool has an adjustment wheel for precise tool adjustments.



Type	Item no.	Description
VEW 6	7619.06000	presetting tool for PG 6 collehlder
VEW 10	7619.10000	presetting tool for PG 10 collehlder
VEW 15	7619.15000	presetting tool for PG 15 collehlder
VEW 25	7619.25000	presetting tool for PG 25 collehlder
VEW 32	7619.32000	presetting tool for PG 32 collehlder

Other presetting tools and automatic presetting tool device on demand.

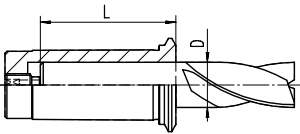


### How it Works

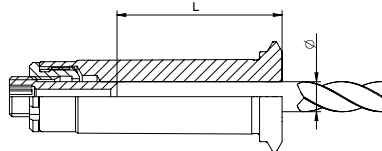
- 1** Insert the length presetting tool into the powRgrip® collehlder
- 2** Insert the powRgrip® collet into length presetting tool
- 3** Insert the cutting tool into the powRgrip® collet
- 4** Adjust the tool length by turning the adjustment wheel
- 5** Measure the total length of the cutting tool and subtract 100 mm from the total length measured total length
- 6** Remove the presetting tool
- 7** Clamp collet and cutting tool into powRgrip® toolholder with the powRgrip® clamping unit



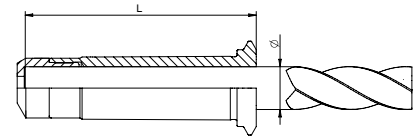
### PG/PG-CF



### PG-S



### PG-L



## Presetting Range of powRgrip® Collets

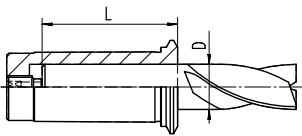
		PG 6		PG 6-S	
D [mm]	D [inch]	L min. [mm]	L max. [mm]	L min. [mm]	L max. [mm]
0.2-1.0	-	21.5	26.5	-	-
1.5	-	23.5	26.5	-	-
-	1/16"	23.5	26.5	-	-
2.0	-	24.0	26.5	-	-
2.5	-	24.0	26.5	-	-
3.0	-	24.0	26.5	17.0	20.0
-	1/8"	24.0	26.5	17.0	20.0

		PG 10 / PG 10-CF		PG 10-S	
D [mm]	D [inch]	L min. [mm]	L max. [mm]	L min. [mm]	L max. [mm]
0.2-1.0	-	20.0	24.0	-	-
1.5	-	16.0	20.0	-	-
-	1/16"	16.0	20.0	-	-
2.0	-	25.0	30.0	-	-
2.5	-	25.0	30.0	-	-
3.0	-	25.0	30.0	20.5	26.0
-	1/8"	25.0	30.0	20.5	26.0
3.5	-	25.0	30.0	-	-
4.0	-	25.0	30.0	20.5	26.0
4.5	-	25.0	30.0	-	-
-	3/16"	25.0	30.0	20.5	26.0
5.0	-	25.0	30.0	-	-
5.5	-	25.0	30.0	-	-
6.0	-	30.0	35.0	-	-
-	1/4"	30.0	35.0	23.5	29.0

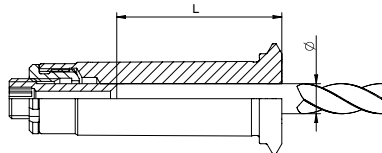
		PG 15 PG 15-CF		PG 15-S		PG 15-L*	
D [mm]	D [inch]	L min. [mm]	L max. [mm]	L min. [mm]	L max. [mm]	L min. [mm]	L max. [mm]
3.0	-	25.0	30.0	-	-	-	-
-	1/8"	25.0	30.0	18.0	25.0	-	-
3.5	-	25.0	30.0	-	-	-	-
4.0	-	25.0	30.0	18.0	25.0	25.0	53.0
4.5	-	25.0	30.0	-	-	-	-
-	3/16"	25.0	30.0	18.0	25.0	-	-
5.0	-	25.0	30.0	18.0	25.0	25.0	53.0
5.5	-	25.0	30.0	-	-	-	-
6.0	-	33.0	38.0	26.0	33.0	33.0	53.0
-	1/4"	33.0	38.0	26	33	33.0	53.0
7.0	-	33.0	38.0	-	-	-	-
-	5/16"	33.0	38.0	26	33	33.0	53.0
8.0	-	33.0	38.0	26	33	33.0	53.0
9.0	-	33.0	38.0	-	-	-	-
-	3/8"	37.0	40.5	31	38	37.0	53.0
10.0	-	37.0	40.5	31	38	37.0	53.0

\*PG-L without stop screw

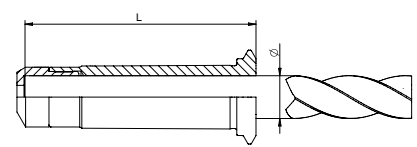
### PG/PG-CF



### PG-S



### PG-L



### Presetting Range of powRarip® Collets

		PG 25 PG 25-CF		PG 25-S		PG 25-L*	
D [mm]	D [Inch]	L min. [mm]	L max. [mm]	L min. [mm]	L max. [mm]	L min. [mm]	L max. [mm]
3.0	-		32.5	-	-	-	-
-	1/8"	25.0	35.2	-	-	-	-
3.5	-	25.0	35.2	-	-	-	-
4.0	-	25.0	35.2	18.0	25.0	-	-
4.5	-	25.0	35.2	-	-	-	-
-	3/16"	25.0	35.2	-	-	-	-
5.0	-	25.0	35.2	-	-	-	-
5.5	-	25.0	35.2	-	-	-	-
6.0	-	33.0	40.5	26.0	33.0	33.0	65.0
-	1/4"	33.0	40.5	26.0	33.0	33.0	65.0
7.0	-	33.0	40.5	-	-	-	-
-	5/16"	33.0	40.5	26.0	33.0	33.0	65.0
8.0	-	33.0	40.5	26.0	33.0	33.0	65.0
9.0	-	33.0	40.5	-	-	-	-
-	3/8"	37.0	44.5	30.0	38.0	37.0	65.0
10.0	-	37.0	44.5	30.0	38.0	37.0	65.0
11.0	-	37.0	44.5	-	-	-	-
-	7/16"	37.0	44.5	-	-	-	-
12.0	-	42.0	49.5	35.0	43.0	42.0	65.0
-	1/2"	42.0	49.5	35.0	43.0	42.0	65.0
13.0	-	42.0	49.5			-	-
14.0	-	42.0	49.5	35.0	43.0	42.0	65.0
-	9/16"	42.0	49.5	-	-	-	-
15.0	-	42.0	49.5	-	-	-	-
-	5/8"	45.5	50.0	38.0	46.0	45.5	65.0
16.0	-	45.5	50.0	38.0	46.0	-	-
18.0	-	45.5	50.0	-	-	-	-
-	3/4"	47.5	50.0	40.0	47.5	47.5	65.0
20.0	-	47.5	50.0	40.0	47.5	47.5	65.0

		PG 32 PG 32-CF		PG 32-S		PG 32-L*	
D [mm]	D [Inch]	L min. [mm]	L max. [mm]	L min. [mm]	L max. [mm]	L min. [mm]	L max. [mm]
6.0	-	33.5	40.9	-	-	-	-
-	1/4"	33.5	40.9	-	-	-	-
7.0	-	33.5	40.9	-	-	-	-
-	5/16"	33.5	40.9	-	-	-	-
8.0	-	33.5	40.9	-	-	-	-
9.0	-	33.5	40.9	-	-	-	-
-	3/8"	35.5	44.9	-	-	-	-
10.0	-	35.5	44.9	-	-	-	-
11.0	-	35.5	44.9	-	-	-	-
-	7/16"	35.5	44.9	-	-	-	-
12.0	-	40.5	49.9	32.0	40.5	40.5	70.0
-	1/2"	40.5	49.9	32.0	40.5	40.5	70.0
13.0	-	40.5	49.9	-	-	-	-
14.0	-	40.5	49.9	35.0	43.0	40.5	70.0
-	9/16"	40.5	49.9	-	-	-	-
15.0	-	40.5	49.9	-	-	-	-
-	5/8"	43.5	52.9	38.0	46.0	-	-
16.0	-	43.5	52.9	35.0	43.5	43.5	70.0
18.0	-	43.5	52.9	-	-	-	-
-	3/4"	45.5	54.9	37.0	45.5	45.5	70.0
20.0	-	45.5	54.9	37.0	45.5	45.5	70.0
22.0	-	45.5	54.9	-	-	-	-
-	7/8"	45.5	54.9	-	-	-	-
25.0	-	49.5	58.0	41.0	49.5	49.5	70.0
-	1"	49.5	58.0	41.0	49.5	49.5	70.0

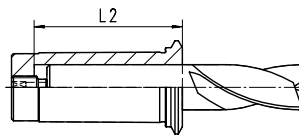
\*PG-L without stop screw



### Maximum Presetting Range for powRgrip® Standard PG Collets and PG-CF

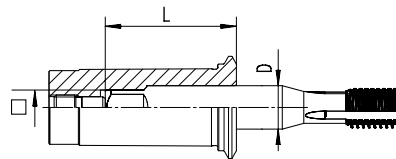
Sizes	PG 10	PG 15	PG 25	PG 32
L2 max	–	40.5	50.0	58.0

L2= Maximum depth (without stop screw)



### Presetting Range of PG-TAP powRgrip® Tapping Collets with Internal Square

D [mm]	Size [mm]	PG 15-TAP		PG 25-TAP	
		L min. [mm]	L max. [mm]	L min. [mm]	L max. [mm]
3.5	2.7	27.0	29.0	–	–
4.5	3.4	27.0	29.0	–	–
6.0	4.9	29.0	31.0	–	–
7.0	5.5	29.0	31.0	–	–
8.0	6.2	33.5	36.0	33.5	36.0
9.0	7.0	34.5	37.0	34.5	37.0
10.0	8.0	35.5	38.0	38.5	41.0
11.0	9.0	–	–	39.5	42.0
12.0	9.0	–	–	39.5	42.0
14.0	11.0	–	–	41.5	44.0
16.0	12.0	–	–	42.5	45.0





## powRgrip® System in Use

W-Präzisionstechnik  
Helmut Wandinger, owner  
[www.wpraез.de](http://www.wpraез.de)



**"With our special solutions, it can take months until we have found the perfect result. This is why price is not the decisive factor. It's all about what you can or cannot do."**

Deicken & Engels  
Maschinenfabrik GmbH & Co. KG.  
Andrew Engels, owner  
[www.deicken-engels.de](http://www.deicken-engels.de)



**"Whoever works and wants to be successful in metal cutting and does not use the powRgrip® system, has no one but himself to blame!"**

Jakadofsky JetEngines  
Peter Jakadofsky, owner  
[www.jakadofsky.com](http://www.jakadofsky.com)



**"The bottom line is that the acquisition costs of the powRgrip® system paid for themselves in only six months. I am extremely impressed by the powRgrip® system!"**

Samvardhana Motherson Peguform  
Volker Grosse,  
Application Engineer  
in the field of plastic milling/welding  
[www.smp-automotive.de](http://www.smp-automotive.de)



**"Since we made the switch to powRgrip®, run-out is far more precise. Plus, the service life of our spindles has been noticeably extended. What's more, tool consumption has dropped considerably."**

Zeulenroda Präzision  
Jens Rabold,  
Technical Manager  
[www.zr-praezision.de](http://www.zr-praezision.de)



**"At first we thought our presetting devices were defective because we no longer detected any run-out errors. This  $\mu$ -precise run-out really fascinated us!"**

REGO-FIX® Partner:

REGO-FIX AG  
4456 Tenniken/Switzerland  
Phone +41 61 976 14 66  
Fax +41 61 976 14 14  
[rego-fix@rego-fix.ch](mailto:rego-fix@rego-fix.ch)

REGO-FIX TOOL CORP.  
Indianapolis, IN 46268 USA  
Phone +1 317 870 59 59  
Fax +1 317 870 59 55  
[info@rego-fix.com](mailto:info@rego-fix.com)

REGO-FIX Precision Tools  
(Shanghai) Co., Ltd.  
Phone +86 21 6160 6933  
Fax +86 21 6160 6939  
[pjiang@rego-fix.cn](mailto:pjiang@rego-fix.cn)