



△ REGO-FIX®
Swiss Line
PHC25/ER20
2625.92003.17

ER_{SYSTEM}

- 11.1 Features | Benefits
- 11.2 Information
- 11.4 PH | ER
- 11.6 PHC | ER (for Coolant Through Tools)
- 11.6 PHC | ER REGO-FIX CAPTO
- 11.8 MPH | ERM (Mini)





Swiss
Precision
Tools

ER

Floating Chucks

Features | Benefits

Swiss Quality

Made in Switzerland to ISO 9001/ISO 14001.

1 Marking

Type and part number.

2 Traceability

Lot number marking on all products for traceability through the entire manufacturing process.

3 Original REGO-FIX®

Our extensive experience results in a well-engineered system. Original only with the REGO-FIX® quality seal \triangle . Guarantee for best quality.

Adjustable Floating Resistance

Continuously adjustable between auto-centering and free floating. No restriction of the floating movement.

Adjustment for Tool Weight

Optimal setup by adjustment of floating resistance.

Vertical and Horizontal Application

Adjustable self-centering keeps the tool at the center of the floating chuck, even in the horizontal position. Prevents chatter marks and extends tool life.

Combined Ball and Friction Bearing

Low load applications:

Ball bearing for easy floating.

High load applications:

Friction bearing to withstand the high pressure.

Double Sealing Against Dirt

Prevents coolant and chips from entering the floating chuck.

Excellent Bore Quality

Only parallel floatation of tool possible.

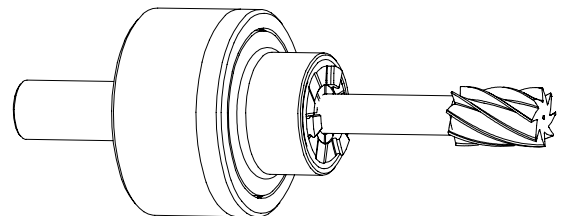


Information

Floating Chuck PH/ER Standard

Applications

REGO-FIX® floating chucks are excellent tools for reaming and tapping. Their design is such that the tool is self-centering in the vertical and horizontal position. The float is always parallel to the rotational axis and the rotation is both clockwise and counter clockwise. The self-centering feature allows very precise positioning of the reaming or tapping tool. This is especially important in horizontal applications, where on ordinary floating chucks the weight of the tool tends to dislocate the tool from the rotational axis. REGO-FIX® floating chucks are a very universal and economical solution to your reaming and tapping applications.



Floating Chuck PHC/ER

For Coolant Through Tools

REGO-FIX® Floating Chucks PHC/ER for coolant through tools are especially designed for internal cooling and have the same advantages as the PH/ER Floating Chucks.



When using coolant through tools please order AXC clamping nuts and the appropriate sealing disks.

Floating Chuck MPH/ER

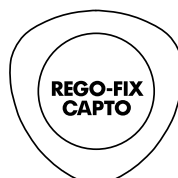
For Tight Space Applications

REGO-FIX® MPH/ER floating chucks are an efficient solution for tight space applications.

Floating Chuck PHC/ER REGO-FIX CAPTO

Polygon Interface

These REGO-FIX CAPTO floating chucks are manufactured with polygon interface.



Certified by Sandvik



Swiss
Precision
Tools

ER

Floating Chucks

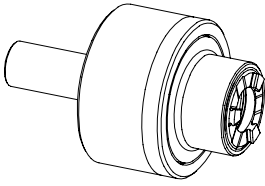
Matching Products

Clamping Nuts | Spanners | Collets

Clamping Nut and Spanner	ER 11	Page	Standard	With Friction Bearing	Balanced	For Coolant Through Tools	Collet Locking System	Mini-Nut	Nut with External Thread	Spanner
ER AX	3311.60000	4.18			■		■		■	
E AX	7117.11000	12.2								■

Collet	ER 11/ET1-12	
	Clamping Range [mm]	Page
ER	0.5 – 7.0	2.8
ER-UP	0.5 – 7.0	2.8
ER-DM	2.75 – 7.0	2.22
ER-MB	0.2 – 0.9	2.8
ER-GB	2.8 – 6.0	3.4
ET 1*	1.4 – 3.55	3.8

*Not for coolant through tools and not for applications with sealing disks.

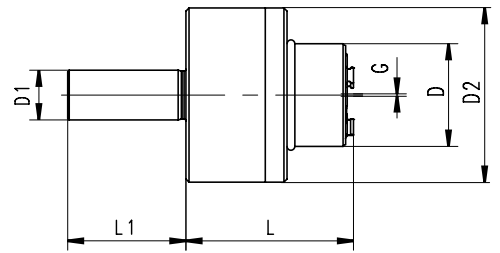


PH | ER

Floating Chucks For Non Coolant Through Tools

Type	Part No.	D [mm]	D1 h6 [mm]	D2 [mm]	G float [mm]	L [mm]	L1 [mm]
PH 5/8" / ER 11	2616.91102	22	15.88	38	0.8	36	34
PH 16 / ER 11	2616.91100	22	16.00	38	0.8	36	34
PH 3/4" / ER 11	2619.91102	22	19.05	38	0.8	36	34
PH 20 / ER 11	2620.91100	22	20.00	38	0.8	36	34
PH 22 / ER 11	2622.91100	22	22.00	38	0.8	36	34

Supplied with: Floating holder, clamping nut and spanner.



Drawings with detailed dimensions see

search.rego-fix.ch



Swiss
Precision
Tools

ER

Floating Chucks

Matching Products

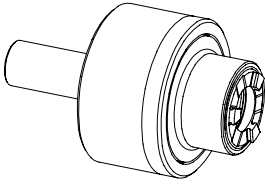
Clamping Nuts | Spanners | Collets

Clamping Nut and Spanner	ER 20	ER 32	Page	Standard	With Friction Bearing	Balanced	For Coolant Through Tools	Collet Locking System	Mini-Nut	Nut with External Thread	Spanner
ER AX	3320.60000	3332.60000	4.18			■		■		■	
ER AXC	3320.70000	3332.70000	4.18			■	■	■		■	
E AX	7117.20000	7117.32000	12.2								■

! When using coolant through tools please order AXC clamping nuts and the appropriate sealing disks.

Collet	ER 11/ET1-12		ER 16/ET1-16		ER 20/ET1-20		ER 25/ET1-25		ER 32/ET1-32		ER 40/ET1-40		ER 50	
	Clamping Range [mm]	Page	Clamping Range [mm]	Page	Clamping Range [mm]	Page	Clamping Range [mm]	Page	Clamping Range [mm]	Page	Clamping Range [mm]	Page	Clamping Range [mm]	Page
ER	-	-	-	-	0.5 – 13.0	2.12	-	-	1.0 – 20.0	2.16	-	-	-	-
ER-UP	-	-	-	-	0.5 – 13.0	2.12	-	-	1.0 – 20.0	2.16	-	-	-	-
ER-DM	-	-	-	-	3.0 – 10.0	2.26	-	-	6.0 – 20.0	2.30	-	-	-	-
ER-MB	-	-	-	-	-	-	-	-	-	-	-	-	-	-
ER-GB	-	-	-	-	4.0 – 11.2	3.4	-	-	4.0 – 20.0	3.4	-	-	-	-
ET 1*	-	-	-	-	2.2 – 7.0	3.8	-	-	4.5 – 12.5	3.8	-	-	-	-

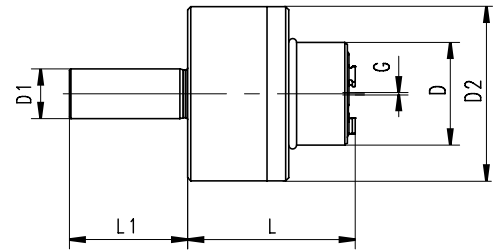
*Not for coolant through tools and not for applications with sealing disks.



PHC | ER

Floating Chucks For Coolant Through Tools

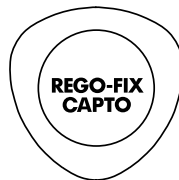
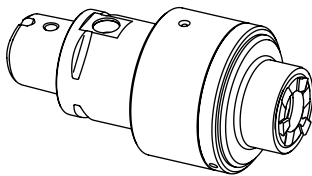
Type	Part No.	D [mm]	D1 h6 [mm]	D2 [mm]	G float [mm]	L [mm]	L1 [mm]
PHC 5/8" / ER 20	2616.92004	33	15.88	56	1.0	53.5	38
PHC 16 / ER 20	2616.92003	33	16.00	56	1.0	53.5	38
PHC 3/4" / ER 20	2619.92004	33	19.05	56	1.0	53.5	38
PHC 20 / ER 20	2620.92003	33	20.00	56	1.0	53.5	38
PHC 22 / ER 20	2622.92003	33	22.00	56	1.0	53.5	38
PHC 25 / ER 20	2625.92003	33	25.00	56	1.0	53.5	38
PHC 1" / ER 20	2625.92004	33	25.40	56	1.5	53.5	38
PHC 3/4" / ER 32	2619.93204	46	19.05	70	1.5	64.5	46
PHC 20 / ER 32	2620.93203	46	20.00	70	1.5	64.5	46
PHC 22 / ER 32	2622.93203	46	22.00	70	1.5	64.5	46
PHC 25 / ER 32	2625.93203	46	25.00	70	1.5	64.5	46
PHC 1" / ER 32	2625.93204	46	25.40	70	1.5	64.5	46
PHC 32 / ER 32	2632.93203	46	32.00	70	1.5	64.5	46
PHC 1.1/4" / ER 32	2632.93204	46	31.75	70	1.5	64.5	46
PHC 1.3/4" / ER 32	2644.93204	46	44.45	70	1.5	64.5	46



Drawings with detailed dimensions see.

search.rego-fix.ch

Supplied with: Floating holder, clamping nut, spanner and adjusting key.



Certified by Sandvik

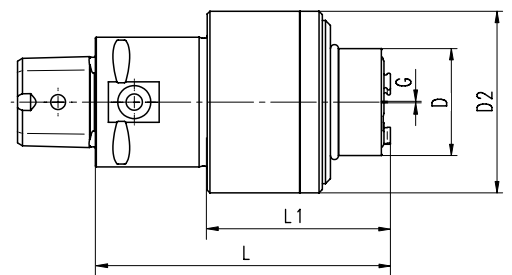
PHC | ER REGO-FIX CAPTO

11

Floating Chucks For Coolant Through Tools and with REGO-FIX CAPTO Interface

Type	Part No.	D [mm]	D2 [mm]	G float [mm]	L [mm]	L1 [mm]
PHC-C3 / ER 20	2803.92003	33	56	0.8	91	53.5
PHC-C4 / ER 20	2804.92003	33	56	0.8	91	56.5
PHC-C4 / ER 32	2804.93203	46	70	0.8	100	64.0

Supplied with: Floating holder, clamping nut, spanner.





Swiss
Precision
Tools

ER

Floating Chucks

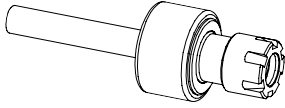
Matching Products

Clamping Nuts | Spanners | Collets

Clamping Nut and Spanner	ER 11	Page	Standard	With Friction Bearing	Balanced	For Coolant Through Tools	Collet Locking System	Mini-Nut	Nut with External Thread	Spanner
Hi-Q/ERM	3511.00000	4.12			■		■	■		
EM	7113.11000	12.1								■
ER MS	3211.50000	4.16			■			■		
E MS	7114.11000	12.2								■

Collet	ER 11/ET1-12	
	Clamping Range [mm]	Page
ER	0.5 – 7.0	2.8
ER-UP	0.5 – 7.0	2.8
ER-DM	2.75 – 7.0	2.22
ER-MB	0.2 – 0.9	2.8
ER-GB	2.8 – 6.0	3.4
ET 1*	1.4 – 3.55	3.8

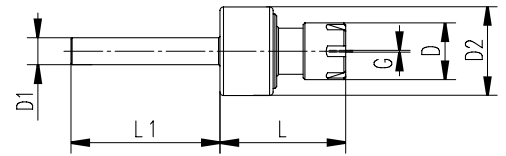
*Not for coolant through tools and not for applications with sealing disks.



Mini-Floating Chucks

Type	Part No.	D [mm]	D1 h6 [mm]	D2 [mm]	G float [mm]	L [mm]	L1 [mm]
MPH 8 / ER 11 M	2608.91107	16	8.00	25	0.5	35	42
MPH 10 / ER 11 M	2610.91107	16	10.00	25	0.5	35	42
MPH 16 / ER 11 M	2616.91107	16	16.00	25	0.5	35	42
MPH 3/4" / ER 11 M	2619.91108	16	19.05	25	0.5	35	70
MPH 20 / ER 11 M	2620.91107	16	20.00	25	0.5	35	42
MPH 22 / ER 11 M	2622.91107	16	22.00	25	0.5	35	42
MPH 25 / ER 11 M	2625.91107	16	25.00	25	0.5	35	40
MPH 1" / ER 11 M	2625.91108	16	25.40	25	0.5	35	40

Supplied with: Floating holder, clamping nut, spanner.



Drawings with detailed dimensions see.

search.rego-fix.ch