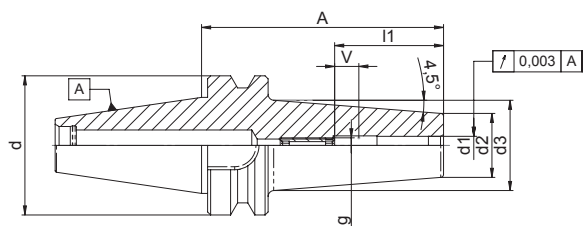


Schrumpffutter BT30

Kühlmittelzufuhr zentral durch den Anzugsbolzen.

gewuchtet für 15 000 U/min.
balanced for 15 000 r.p.m.



Shrink Fit Chucks BT30

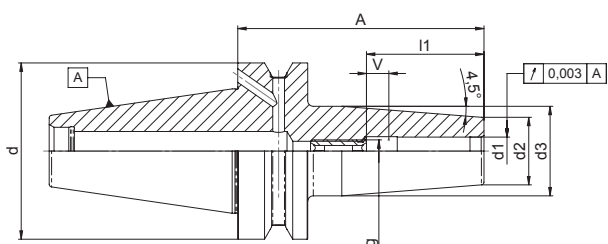
with central coolant through.

Bestell-Nr. Order-No.	Kegel / Taper BT	d1	d2	d3	l1	A	V	g	HSS
72.150.500.010	30	3	15	25	20	80	5	M6	-
72.150.500.040		4	15	25	20	80	5	M6	-
72.150.500.070		5	15	25	25	80	5	M6	-
72.150.500.100		6	21	31	36	80	10	M5	✓
72.150.500.200		8	21	31	36	80	10	M6	✓
72.150.500.300		10	24	34	41	80	10	M8x1	✓
72.150.500.400		12	24	34	46	80	10	M10x1	✓
72.150.500.500		16	27	37	49	80	10	M12x1	✓

Schrumpffutter BT40

Kühlmittelzufuhr wahlweise über den Werkzeugbund.

gewuchtet für 15 000 U/min.
balanced for 15 000 r.p.m.



Shrink Fit Chucks BT40

with coolant through application.

Bestell-Nr. Order-No.	Kegel / Taper BT	d1	d2	d3	l1	A	V	g	HSS
72.160.500.010*	40	3	15	20	20	90	5	M6	-
72.160.500.040*		4	15	20	20	90	5	M6	-
72.160.500.070*		5	15	20	25	90	5	M6	-
72.161.500.100		6	21	27	36	90	10	M5	✓
72.161.500.160		6	21	32	36	160	10	M5	✓
72.161.500.200		8	21	27	36	90	10	M6	✓
72.161.500.260		8	20	32	36	160	10	M6	✓
72.161.500.300		10	24	32	42	90	10	M8x1	✓
72.161.500.360		10	24	34	42	160	10	M8x1	✓
72.161.500.400		12	24	32	47	90	10	M10x1	✓
72.161.500.460		12	24	34	47	160	10	M8x1	✓
72.161.500.470		14	27	34	47	90	10	M10x1	✓
72.161.500.480		14	27	42	47	160	10	M10x1	✓
72.161.500.500		16	27	34	50	90	10	M12x1	✓
72.161.500.560		16	27	42	50	160	10	M12x1	✓
72.161.500.570		18	33	42	50	90	10	M12x1	✓
72.161.500.580		18	33	51	50	160	10	M12x1	✓
72.161.500.600		20	33	42	52	90	10	M16x1	✓
72.161.500.660		20	33	51	52	160	10	M16x1	✓
72.161.500.700		25	44	53	58	100	10	M16x1	✓
72.161.500.760		25	44	53	58	160	10	M16x1	✓

* ohne Kühlbohrungen über den Bund
without coolant bores through the flange