



## Multi Line

Trustworthy toolholding solutions

Product catalog

**REGO-FIX** 

# Weldon end mill holders SK/WD

Universally suitable for different machining applications.

DIN 69871 / DIN ISO 7388-1

## Features of end mill holders (Weldon)

### Runout TIR $\leq 3 \mu\text{m}$

Measured from inner bore to outer taper.

### Taper accuracy AT3

Better spindle-to-holder fit and accuracy.

### Side locking screw

For highest transferable torque.

### Coolant supply

All toolholders with form A+AD can be used for cooling. Form A+AD delivers the coolant supply through the taper.

### ID chip hole

In accordance with DIN 69873 for 10 mm diameter.



## Weldon end mill holders SK/WD

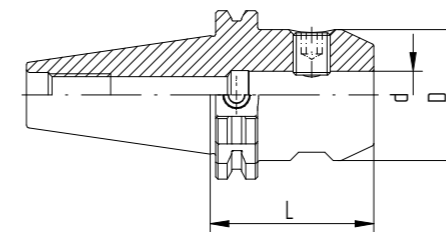
SK/WD

DIN 69871

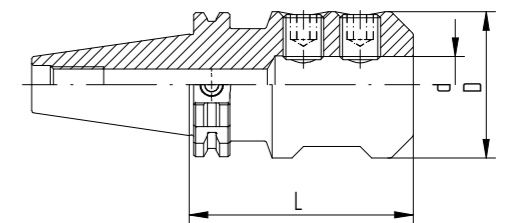
DIN ISO 7388-1

Type	Part no.	Dimensions [mm]			Form A+AD	Drawing
		D	d	L		
<b>SK 40</b>						
SK 40 / WD 6 x 050	2240.30620	25	6	50	•	1
SK 40 / WD 8 x 050	2240.30820	28	8	50	•	1
SK 40 / WD 10 x 050	2240.31020	35	10	50	•	1
SK 40 / WD 12 x 050	2240.31220	42	12	50	•	1
SK 40 / WD 14 x 050	2240.31420	44	14	50	•	1
SK 40 / WD 16 x 063	2240.31630	48	16	63	•	1
SK 40 / WD 18 x 063	2240.31830	50	18	63	•	1
SK 40 / WD 20 x 063	2240.32030	52	20	63	•	1
SK 40 / WD 25 x 100	2240.32560	65	25	100	•	2
SK 40 / WD 32 x 100	2240.33260	72	32	100	•	2
<b>SK 50</b>						
SK 50 / WD 6 x 063	2250.30630	25	6	63	•	1
SK 50 / WD 8 x 063	2250.30830	28	8	63	•	1
SK 50 / WD 10 x 063	2250.31030	35	10	63	•	1
SK 50 / WD 12 x 063	2250.31230	42	12	63	•	1
SK 50 / WD 14 x 063	2250.31430	44	14	63	•	1
SK 50 / WD 16 x 063	2250.31630	48	16	63	•	1
SK 50 / WD 18 x 063	2250.31830	50	18	63	•	1
SK 50 / WD 20 x 063	2250.32030	52	20	63	•	1
SK 50 / WD 25 x 080	2250.32550	65	25	80	•	2
SK 50 / WD 32 x 100	2250.33260	72	32	100	•	2
SK 50 / WD 40 x 100	2250.34060	80	40	100	•	2

Included in delivery: End mill holder and lock screw.



Drawing 1 SK / WD



Drawing 2 SK / WD

# Universal shell/face mill holders SK/KFD

SK / KFD  
DIN 69871  
DIN ISO 7388-1

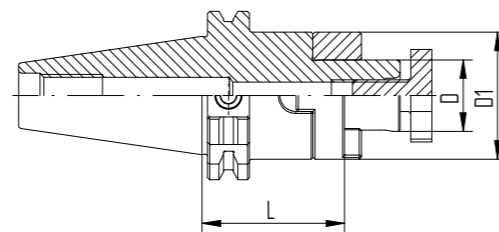
Type	Part no.	Dimensions [mm]					Drawing	Accessory Wrench
		D	D1	L	Form A+AD			
<b>SK 40</b>								
SK 40 / KFD 16 x 055	2240.41630	16	32	55	•	1	FDS 16	
SK 40 / KFD 22 x 055	2240.42230	22	40	55	•	1	FDS 22	
SK 40 / KFD 27 x 055	2240.42730	27	48	55	•	1	FDS 27	
SK 40 / KFD 32 x 060	2240.43240	32	58	60	•	2	FDS 32	
SK 40 / KFD 40 x 060	2240.44040	40	70	60	•	2	FDS 40	
<b>SK 50</b>								
SK 50 / KFD 16 x 055	2250.41630	16	32	55	•	1	FDS 16	
SK 50 / KFD 22 x 055	2250.42230	22	40	55	•	1	FDS 22	
SK 50 / KFD 27 x 055	2250.42730	27	48	55	•	1	FDS 27	
SK 50 / KFD 32 x 055	2250.43230	32	58	55	•	1	FDS 32	
SK 50 / KFD 40 x 055	2250.44030	40	70	55	•	1	FDS 40	
SK 50 / KFD 50 x 070	2250.45050	50	90	70	•	2	FDS 50	

Included in delivery: Universal shell/face mill holder, lock screw, feather key and drive ring.

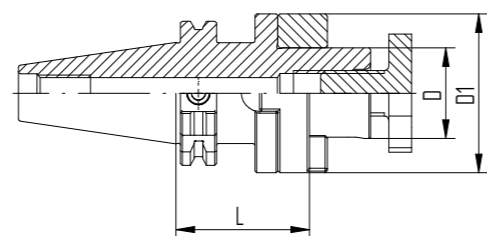
For details on our FDS wrenches, please refer to page 40.



SK / KFD



Drawing 1 SK / KFD



Drawing 2 SK / KFD

# Drill chucks SK/KBF

SK / KBF  
DIN 69871  
DIN ISO 7388-1

Type	Part no.	Dimensions [mm]					Form A	Form A+AD
		D	d	L				
<b>SK 30</b>								
SK 30 / KBF 1 – 13 mm	2230.50100	50	1–13	111	•	–	–	
<b>SK 40</b>								
SK 40 / KBF 1 – 13 mm	2240.50103	50	1–13	90	–	•	–	
<b>SK 50</b>								
SK 50 / KBF 1 – 13 mm	2250.50103	50	1–13	106	–	•	–	

Included in delivery: Drill chuck and Allen key™.

Drill chucks SK/KBF

## Features and benefits

### Clamping range

1–13 mm

### Maximum runout

0.03 mm

### Maximum tightening torque

20 Nm

### Clamping force (at 20 Nm tightening torque)

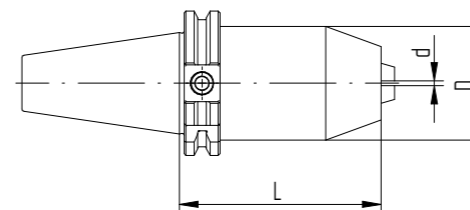
80 Nm

### Maximum rpm

35,000 min<sup>-1</sup>



SK / KBF



SK / KBF



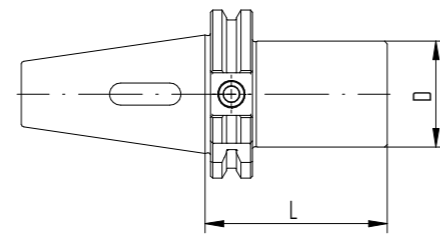
## Morse taper holders SK / MK

SK / MK

DIN 69871

DIN ISO 7388-1

Type	Part no.	Dimensions [mm]	
		D	L
<b>SK 40</b>			
SK 40 / MK 1 x 050	2240.80110	25	50
SK 40 / MK 2 x 050	2240.80210	32	50
SK 40 / MK 3 x 070	2240.80320	40	70
SK 40 / MK 4 x 095	2240.80430	48	95



Customers from all around the world rely on Swiss-made REGO-FIX products. From Switzerland, we deliver customers in fast-paced industries with the highest demands for precision.

We offer competitive solutions



# Weldon end mill holders BT/WD

Universally suitable different machining applications, the BT interface toolholders cater to different machining needs.

MAS 403 / JIS B 6339 / DIN ISO 7388-2

## Features of end mill holders (Weldon)

### Runout TIR $\leq 3 \mu\text{m}$

Measured from inner bore to outer taper.

### Taper accuracy AT3

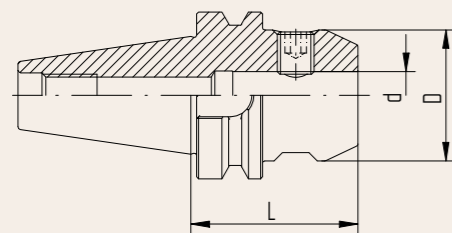
Better spindle-to-holder fit and accuracy.

### Side locking screw

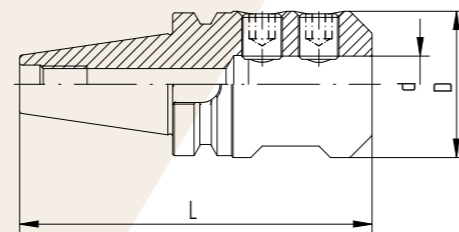
For highest transferable torque.

### Coolant supply

All toolholders with form A+AD can be used for cooling. Form A+AD delivers the coolant supply through the taper.



Drawing 1 BT / WD



Drawing 2 BT / WD

## Weldon end mill holders BT/WD

BT/WD

MAS 403

JIS B 6339

DIN ISO 7388-2

Type	Part no.	Dimensions [mm]			Form A+AD	Drawing
		D	d	L		
<b>BT 30</b>						
BT 30 / WD 6 x 050	2130.30620	25	6	50	•	1
BT 30 / WD 8 x 050	2130.30820	28	8	50	•	1
BT 30 / WD 10 x 050	2130.31020	35	10	50	•	1
BT 30 / WD 12 x 050	2130.31220	42	12	50	•	1
BT 30 / WD 14 x 050	2130.31420	44	14	50	•	1
BT 30 / WD 16 x 063	2130.31630	48	16	63	•	1
BT 30 / WD 18 x 063	2130.31830	50	18	63	•	1
BT 30 / WD 20 x 063	2130.32030	52	20	63	•	1
<b>BT 40</b>						
BT 40 / WD 6 x 050	2140.30620	25	6	50	•	1
BT 40 / WD 8 x 050	2140.30820	28	8	50	•	1
BT 40 / WD 10 x 063	2140.31030	35	10	63	•	1
BT 40 / WD 12 x 063	2140.31230	42	12	63	•	1
BT 40 / WD 14 x 063	2140.31430	44	14	63	•	1
BT 40 / WD 16 x 063	2140.31630	48	16	63	•	1
BT 40 / WD 18 x 063	2140.31830	50	18	63	•	1
BT 40 / WD 20 x 063	2140.32030	52	20	63	•	1
BT 40 / WD 25 x 090	2140.32550	65	25	90	•	2
BT 40 / WD 32 x 100	2140.33260	72	32	100	•	2
<b>BT 50</b>						
BT 50 / WD 6 x 063	2150.30630	25	6	63	•	1
BT 50 / WD 8 x 063	2150.30830	28	8	63	•	1
BT 50 / WD 10 x 063	2150.31030	35	10	63	•	1
BT 50 / WD 12 x 080	2150.31250	42	12	80	•	1
BT 50 / WD 14 x 080	2150.31450	44	14	80	•	1
BT 50 / WD 16 x 080	2150.31650	48	16	80	•	1
BT 50 / WD 18 x 080	2150.31850	50	18	80	•	1
BT 50 / WD 20 x 080	2150.32050	52	20	80	•	1
BT 50 / WD 25 x 100	2150.32560	65	25	100	•	2
BT 50 / WD 32 x 105	2150.33260	72	32	105	•	2
BT 50 / WD 40 x 110	2150.34060	80	40	110	•	2

Included in delivery: End mill holder and lock screw.

## Universal shell/face mill holders BT/KFD

BT / KFD  
MAS 403  
JIS B 6339  
DIN ISO 7388-2

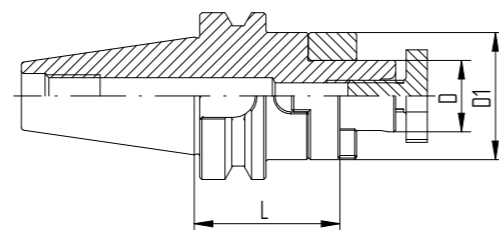
Type	Part no.	Dimensions [mm]					Drawing	Accessory Wrench
		D	D1	L	Form A+AD			
<b>BT 30</b>								
BT 30 / KFD 16 x 045	2130.41620	16	32	45	•	1	FDS 16	
BT 30 / KFD 22 x 047	2130.42220	22	40	47	•	1	FDS 22	
BT 30 / KFD 27 x 049	2130.42720	27	48	49	•	2	FDS 27	
BT 30 / KFD 32 x 053	2130.43230	32	58	53	•	2	FDS 32	
<b>BT 40</b>								
BT 40 / KFD 16 x 055	2140.41630	16	32	55	•	1	FDS 16	
BT 40 / KFD 22 x 055	2140.42230	22	40	55	•	1	FDS 22	
BT 40 / KFD 27 x 055	2140.42730	27	48	55	•	1	FDS 27	
BT 40 / KFD 32 x 060	2140.43240	32	58	60	•	1	FDS 32	
BT 40 / KFD 40 x 060	2140.44040	40	70	60	•	2	FDS 40	
<b>BT 50</b>								
BT 50 / KFD 16 x 070	2150.41630	16	32	70	•	1	FDS 16	
BT 50 / KFD 22 x 070	2150.42230	22	40	70	•	1	FDS 22	
BT 50 / KFD 27 x 070	2150.42750	27	48	70	•	1	FDS 27	
BT 50 / KFD 32 x 070	2150.43250	32	58	70	•	1	FDS 32	
BT 50 / KFD 40 x 070	2150.44050	40	70	70	•	1	FDS 40	
BT 50 / KFD 50 x 070	2150.45050	50	90	70	•	1	FDS 50	

For details on our FDS wrenches, please refer to page 40.

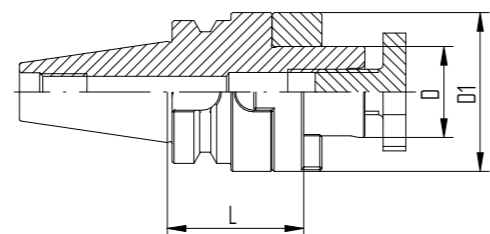
Included in delivery: Universal shell/face mill holder, lock screw, feather key and drive ring.



BT / KFD



Drawing 1 BT / KFD



Drawing 2 BT / KFD

## Drill chucks BT/KBF

BT / KBF  
MAS 403  
JIS B 6339  
DIN ISO 7388-2

Type	Part no.	d	Dimensions [mm]			Form A	Form A+AD
			D	L			
<b>BT 30</b>							
BT 30 / KBF 1 – 13 mm	2130.50100	1–13	50	95	•	–	
<b>BT 40</b>							
BT 40 / KBF 1 – 13 mm	2140.50103	1–13	50	98	–	•	
<b>BT 50</b>							
BT 50 / KBF 1 – 13 mm	2150.50103	1–13	50	100	–	•	

Included in delivery: Drill chuck and Allen key™.

Drill chucks BT/KBF

### Features and benefits

#### Clamping range

1–13 mm

#### Maximum runout

0.03 mm

#### Maximum tightening torque

20 Nm

#### Clamping force (at 20 Nm tightening torque)

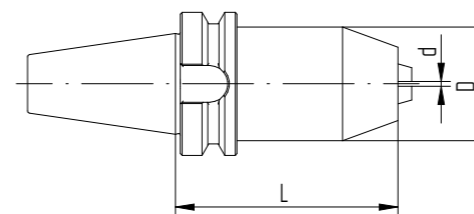
80 Nm

#### Maximum rpm

35,000 min<sup>-1</sup>



BT / KBF



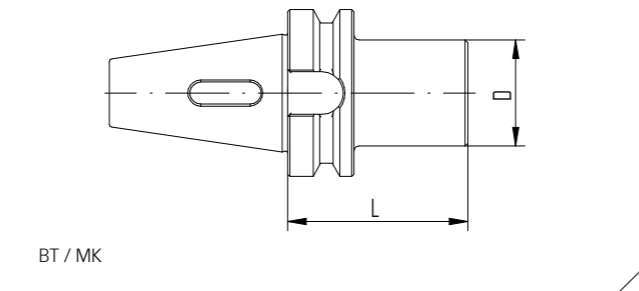
BT / KBF



## Morse taper holders BT / MK

BT / MK  
 MAS 403  
 JIS B 6339  
 DIN ISO 7388-2

Type	Part no.	Dimensions [mm]	
		D	L
<b>BT 40</b>			
BT 40 / MK 1 x 050	2140.80110	25	50
BT 40 / MK 2 x 050	2140.80210	32	50
BT 40 / MK 3 x 070	2140.80320	40	70
BT 40 / MK 4 x 095	2140.80430	48	95



What you see is what you get:  
 all our products bear the REGO-FIX triangle –  
 our seal for outstanding Swiss quality.

Only genuine with the triangle

## Weldon end mill holders HSK-A/WD

HSK/WD

DIN 69893

ISO 12164

Type	Part no.	Dimensions [mm]			Drawing
		d	D	L	
<b>HSK-A 32</b>					
HSK-A 32 / WD 6 x 055*	2532.30620	6	25	55	1
HSK-A 32 / WD 8 x 055*	2532.30820	8	28	55	1
HSK-A 32 / WD 10 x 063*	2532.31030	10	35	63	1
HSK-A 32 / WD 12 x 065*	2532.31230	12	42	65	1
<b>HSK-A 40</b>					
HSK-A 40 / WD 6 x 060	2540.30630	6	25	60	1
HSK-A 40 / WD 8 x 060	2540.30830	8	28	60	1
HSK-A 40 / WD 10 x 060	2540.31030	10	35	60	1
HSK-A 40 / WD 12 x 070	2540.31240	12	42	70	1
HSK-A 40 / WD 14 x 075	2540.31440	14	44	75	1
HSK-A 40 / WD 16 x 075	2540.31640	16	48	75	1
<b>HSK-A 50</b>					
HSK-A 50 / WD 6 x 065	2550.30630	6	25	65	1
HSK-A 50 / WD 8 x 065	2550.30830	8	28	65	1
HSK-A 50 / WD 10 x 065	2550.31030	10	35	65	1
HSK-A 50 / WD 12 x 080	2550.31250	12	42	80	1
HSK-A 50 / WD 14 x 080	2550.31450	14	44	80	1
HSK-A 50 / WD 16 x 080	2550.31650	16	48	80	1
HSK-A 50 / WD 18 x 080	2550.31850	18	50	80	1
HSK-A 50 / WD 20 x 080	2550.32050	20	52	80	1
<b>HSK-A 63</b>					
HSK-A 63 / WD 6 x 065	2563.30630	6	25	65	1
HSK-A 63 / WD 8 x 065	2563.30830	8	28	65	1
HSK-A 63 / WD 10 x 065	2563.31030	10	35	65	1
HSK-A 63 / WD 12 x 080	2563.31250	12	42	80	1
HSK-A 63 / WD 14 x 080	2563.31450	14	44	80	1
HSK-A 63 / WD 16 x 080	2563.31650	16	48	80	1
HSK-A 63 / WD 18 x 080	2563.31850	18	50	80	1
HSK-A 63 / WD 20 x 080	2563.32050	20	52	80	1
HSK-A 63 / WD 25 x 110	2563.32560	25	65	110	2
HSK-A 63 / WD 32 x 110	2563.33260	32	72	110	2

\* HSK taper without side hole.

## Weldon end mill holders HSK-A/WD and HSK-E/WD

HSK/WD

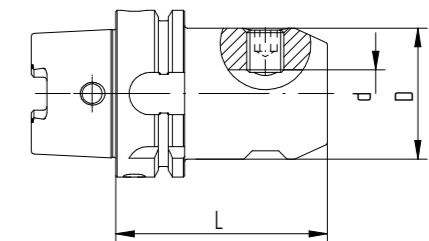
DIN 69893

ISO 12164

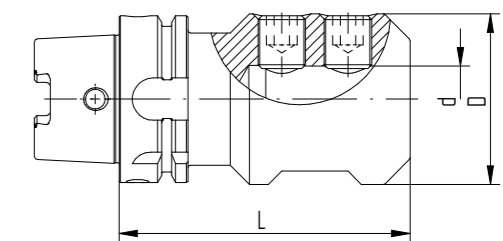
Type	Part no.	Dimensions [mm]			Drawing
		d	D	L	
<b>HSK-A 100</b>					
HSK-A 100 / WD 6 x 080	2500.30650	6	25	80	1
HSK-A 100 / WD 8 x 080	2500.30850	8	28	80	1
HSK-A 100 / WD 10 x 080	2500.31050	10	35	80	1
HSK-A 100 / WD 12 x 080	2500.31250	12	42	80	1
HSK-A 100 / WD 14 x 080	2500.31450	14	44	80	1
HSK-A 100 / WD 16 x 100	2500.31660	16	48	100	1
HSK-A 100 / WD 18 x 100	2500.31860	18	50	100	1
HSK-A 100 / WD 20 x 100	2500.32060	20	52	100	1
HSK-A 100 / WD 25 x 100	2500.32560	25	65	100	2
HSK-A 100 / WD 32 x 100	2500.33260	32	72	100	2
HSK-A 100 / WD 40 x 110	2500.34060	40	80	110	2
<b>HSK-E 40</b>					
HSK-E 40 / WD 6 x 060	2540.30634	6	25	60	1
HSK-E 40 / WD 8 x 060	2540.30834	8	28	60	1
HSK-E 40 / WD 10 x 060	2540.31034	10	35	60	1
HSK-E 40 / WD 12 x 070	2540.31244	12	42	70	1
HSK-E 40 / WD 16 x 070	2540.31644	16	48	70	1

Included in delivery: End mill holder and lock screw.

HSK-A: Hole for data carrier DIN STD 69873 in the flange available on request.



Drawing 1 HSK-A / WD



Drawing 2 HSK-A / WD



## Universal shell/face mill holders HSK-A/KFD and HSK-E/KFD

HSK/KFD  
DIN 69893  
ISO 12164

Type	Part no.	Dimensions [mm]			Drawing	Accessories Wrench
		D	D1	L		
<b>HSK-A 32</b>						
HSK-A 32 / KFD 16 x 045	2532.41620	16	32	45	1	FDS 16
HSK-A 32 / KFD 22 x 050	2532.42230	22	40	50	1	FDS 22
<b>HSK-A 40</b>						
HSK-A 40 / KFD 16 x 030	2540.41600	16	32	30	1	FDS 16
HSK-A 40 / KFD 22 x 050	2540.42230	22	40	50	1	FDS 22
<b>HSK-A 50</b>						
HSK-A 50 / KFD 16 x 050	2550.41630	16	32	50	1	FDS 16
HSK-A 50 / KFD 22 x 050	2550.42230	22	40	50	1	FDS 22
HSK-A 50 / KFD 27 x 065	2550.42740	27	48	65	2	FDS 27
HSK-A 50 / KFD 32 x 065	2550.43240	32	58	65	2	FDS 32
<b>HSK-A 63</b>						
HSK-A 63 / KFD 16 x 060	2563.41640	16	32	60	1	FDS 16
HSK-A 63 / KFD 22 x 060	2563.42240	22	40	60	1	FDS 22
HSK-A 63 / KFD 27 x 060	2563.42740	27	48	60	1	FDS 27
HSK-A 63 / KFD 32 x 060	2563.43240	32	58	60	1	FDS 32
HSK-A 63 / KFD 40 x 070	2563.44050	40	70	70	2	FDS 40
<b>HSK-A 100</b>						
HSK-A 100 / KFD 16 x 060	2500.41640	16	32	60	1	FDS 16
HSK-A 100 / KFD 22 x 060	2500.42240	22	40	60	1	FDS 22
HSK-A 100 / KFD 27 x 060	2500.42740	27	48	60	1	FDS 27
HSK-A 100 / KFD 32 x 060	2500.43240	32	58	60	1	FDS 32
HSK-A 100 / KFD 40 x 070	2500.44050	40	70	70	1	FDS 40
HSK-A 100 / KFD 50 x 080	2500.45060	50	90	80	2	FDS 50
<b>HSK-E 40</b>						
HSK-E 40 / KFD 16 x 045	2540.41624	16	32	45	-	FDS 16

Included in delivery: Universal shell/face mill holder, lock screw, feather key and drive ring.

For details on our FDS wrenches, please refer to page 40.

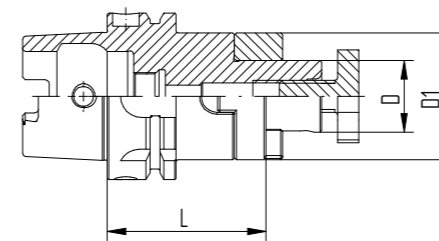
HSK-A: Hole for data carrier DIN STD 69873 in the flange available on request.

## Universal shell/face mill holders HSK-A/KFD and HSK-E/KFD

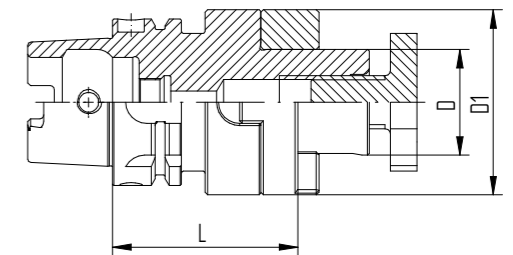
HSK/KFD  
DIN 69893  
ISO 12164



HSK-A / KFD



Drawing 1 HSK-A / KFD



Drawing 2 HSK-A / KFD

## Drill chucks HSK-A/KBF

HSK-A/KBF

DIN 69893

ISO 12164

Type	Part no.	d	Dimensions [mm]	
			D	L
<b>HSK-A 63 / KBF</b>				
HSK-A 63 / KBF 1 – 13 mm	2563.50100	1–13	50	104

Included in delivery: Drill chuck and Allen key™.

HSK-A: Hole for data carrier DIN STD 69873 in the flange available on request.

## Morse taper holders HSK-A/MK

HSK-A/MK

DIN 69893

ISO 12164

Type	Part no.	Dimensions [mm]	
		D	L
<b>HSK-A 63 / MK</b>			
HSK-A 63 / MK 1 x 100	2563.80140	25	100
HSK-A 63 / MK 2 x 120	2563.80250	32	120
HSK-A 63 / MK 3 x 140	2563.80360	40	140
HSK-A 63 / MK 4 x 160	2563.80470	48	160

HSK-A: Hole for data carrier DIN STD 69873 in the flange available on request.

Drill chucks HSK-A/KBF

### Features and benefits

#### Clamping range

1–13 mm

#### Maximum runout

0.03 mm

#### Maximum tightening torque

20 Nm

#### Clamping force (at 20 Nm tightening torque)

80 Nm

#### Maximum rpm

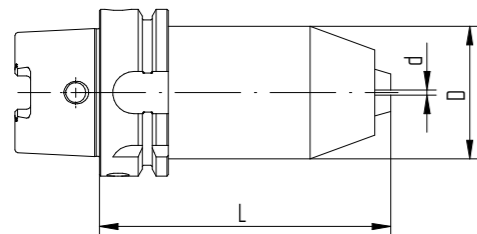
35,000 min<sup>-1</sup>



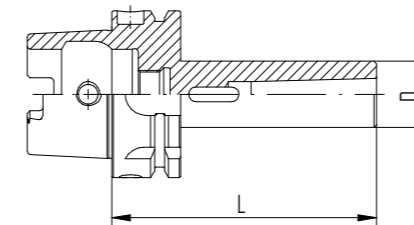
HSK-A / KBF



HSK-A / MK



HSK-A / KBF



HSK-A / MK

# REGO-FIX CAPTO licensed by Sandvik Coromant

## End mill holders REGO-FIX C/WD

These self-centering and balanced holders enable a high torque transmission and show a high bending strength.

ISO 12164

### Features of end mill holders (Weldon)

#### Runout TIR $\leq 3 \mu\text{m}$

Measured from inner bore to outer taper.

#### Side locking screw

For highest transferable torque.

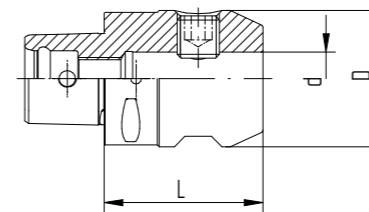
**Certified** REGO-FIX CAPTO – licensed by Sandvik Coromant – is manufactured at REGO-FIX Switzerland under license according to CAPTO specifications.



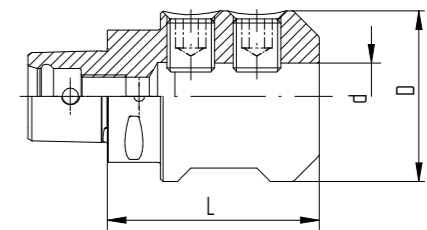
## REGO-FIX CAPTO holders licensed by Sandvik Coromant

### End mill holders REGO-FIX C/WD

Type	Part no.	Dimensions [mm]			Drawing
		D1	d	L	
<b>C3</b>					
C3 / WD 6 x 045	2803.30610	25	6	45	1
C3 / WD 8 x 045	2803.30810	28	8	45	1
C3 / WD 10 x 050	2803.31020	35	10	50	1
C3 / WD 12 x 055	2803.31220	42	12	55	1
<b>C4</b>					
C4 / WD 6 x 050	2804.30620	25	6	50	1
C4 / WD 8 x 050	2804.30820	28	8	50	1
C4 / WD 10 x 050	2804.31020	35	10	50	1
C4 / WD 12 x 055	2804.31220	42	12	55	1
C4 / WD 14 x 055	2804.31420	44	14	55	1
C4 / WD 16 x 055	2804.31620	48	16	55	1
<b>C5</b>					
C5 / WD 6 x 050	2805.30620	25	6	50	1
C5 / WD 8 x 050	2805.30820	28	8	50	1
C5 / WD 10 x 055	2805.31020	35	10	55	1
C5 / WD 12 x 060	2805.31230	42	12	60	1
C5 / WD 14 x 060	2805.31430	44	14	60	1
C5 / WD 16 x 060	2805.31630	48	16	60	1
C5 / WD 18 x 060	2805.31830	50	18	60	1
C5 / WD 20 x 060	2805.32030	52	20	60	1
C5 / WD 25 x 080	2805.32550	65	25	80	2



Drawing 1 C/WD



Drawing 2 C/WD



End mill holders REGO-FIX C/WD

C/WD

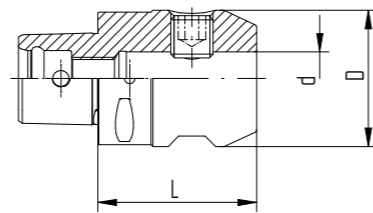
ISO 26623

Type	Part no.	Dimensions [mm]			Drawing
		D1	d	L	
<b>C6</b>					
C6 / WD 6 x 055	2806.30620	25	6	55	1
C6 / WD 8 x 055	2806.30820	28	8	55	1
C6 / WD 10 x 060	2806.31030	35	10	60	1
C6 / WD 12 x 060	2806.31230	42	12	60	1
C6 / WD 14 x 060	2806.31430	44	14	60	1
C6 / WD 16 x 065	2806.31630	48	16	65	1
C6 / WD 18 x 065	2806.31830	50	18	65	1
C6 / WD 20 x 065	2806.32030	52	20	65	1
C6 / WD 25 x 080	2806.32550	65	25	80	2
C6 / WD 32 x 090	2806.33250	72	32	90	2
C6 / WD 40 x 100	2806.34060	80	40	100	2

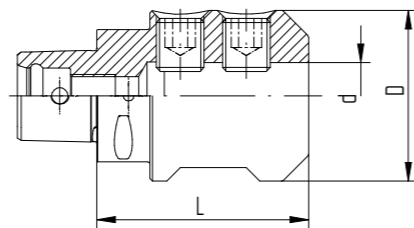
<b>C8</b>					
C8 / WD 6 x 070	2808.30640	25	6	70	1
C8 / WD 8 x 070	2808.30840	28	8	70	1
C8 / WD 10 x 070	2808.31040	35	10	70	1
C8 / WD 12 x 070	2808.31240	42	12	70	1
C8 / WD 14 x 070	2808.31440	44	14	70	1
C8 / WD 16 x 070	2808.31640	48	16	70	1
C8 / WD 18 x 070	2808.31840	50	18	70	1
C8 / WD 20 x 070	2808.32040	52	20	70	1
C8 / WD 25 x 080	2808.32550	65	25	80	2
C8 / WD 32 x 080	2808.33250	72	32	80	2
C8 / WD 40 x 110	2808.34060	80	40	110	2



C / WD



Drawing 1 C / WD



Drawing 2 C / WD

Shell mill arbors REGO-FIX C/MA

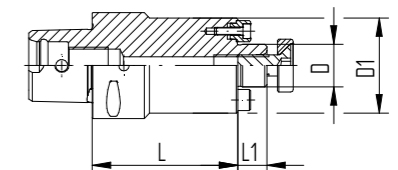
C/MA

ISO 26623

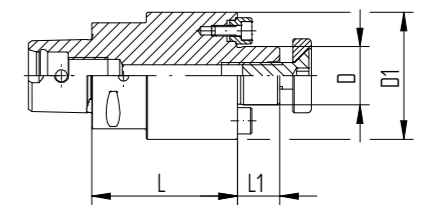
Type	Part no.	Dimensions [mm]				Drawing
		D	D1	L	L1	
<b>C3</b>						
C3 / MA 16 x 030	2803.01610	16	36	30	11	2
<b>C4</b>						
C4 / MA 16 x 032	2804.01610	16	36	32	11	1
C4 / MA 16 x 055	2804.01620	16	36	55	11	1
C4 / MA 22 x 025	2804.02210	22	48	25	16	2
C4 / MA 22 x 055	2804.02220	22	48	55	16	2
<b>C5</b>						
C5 / MA 16 x 035	2805.01610	16	36	35	11	1
C5 / MA 16 x 070	2805.01640	16	36	70	11	1
C5 / MA 22 x 025	2805.02210	22	50	25	16	1
C5 / MA 22 x 070	2805.02240	22	48	70	16	1
C5 / MA 27 x 025	2805.02710	27	56	25	18	2
C5 / MA 32 x 040	2805.03210	32	65	40	20	2



C / MA



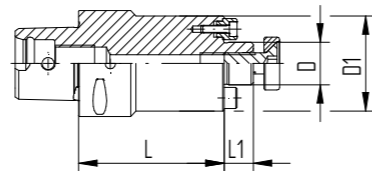
Drawing 1 C / MA



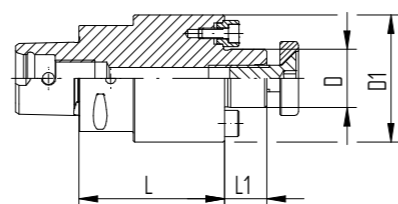
Drawing 2 C / MA

Shell mill arbors REGO-FIX C/MA

Type	Part no.	Dimensions [mm]				Drawing
		D	D1	L	L1	
<b>C6</b>						
C6 / MA 16 x 040	2806.01610	16	36	40	11	1
C6 / MA 22 x 025	2806.02210	22	55	25	16	1
C6 / MA 27 x 025	2806.02710	27	63	25	18	1
C6 / MA 32 x 025	2806.03210	32	65	25	20	2
C6 / MA 40 x 040	2806.04010	40	80	40	23	2
<b>C8</b>						
C8 / MA 16 x 050	2808.01620	16	36	50	11	1
C8 / MA 22 x 030	2808.02210	22	55	30	16	1
C8 / MA 27 x 030	2808.02710	27	65	30	18	1
C8 / MA 32 x 030	2808.03210	32	80	30	20	1
C8 / MA 40 x 030	2808.04010	40	80	30	23	1



Drawing 1 C / MA



Drawing 2 C / MA

We believe in sustainable business. To us, this also means investing in young talents and support them to become machining experts.

Investing into the future



## Reduction sleeves HS and HS-CF

HS

Ø bore [mm]	Part no.							
	HS 12-MB	HS 12	HS 12-CF	HS 20	HS 20-CF	HS 25	HS 32	HS 32-CF
1.0	1912.01009	-	-	-	-	-	-	-
1.5	1912.01509	-	-	-	-	-	-	-
2.0	1912.02009	-	-	-	-	-	-	-
2.5	1912.02509	-	-	-	-	-	-	-
3.0	-	1912.03000	1912.03002	1920.03000	1920.03002	1925.03000	1932.03000	-
4.0	-	1912.04000	1912.04002	1920.04000	1920.04002	1925.04000	1932.04000	-
5.0	-	1912.05000	1912.05002	1920.05000	1920.05002	1925.05000	1932.05000	-
6.0	-	1912.06000	1912.06002	1920.06000	1920.06002	1925.06000	1932.06000	1932.06002
7.0	-	1912.07000	-	1920.07000	-	1925.07000	1932.07000	-
8.0	-	1912.08000	1912.08002	1920.08000	1920.08002	1925.08000	1932.08000	1932.08002
9.0	-	1912.09000	-	1920.09000	-	1925.09000	1932.09000	-
10.0	-	1912.10000	-	1920.10000	1920.10002	1925.10000	1932.10000	1932.10002
11.0	-	-	-	1920.11000	-	-	1932.11000	-
12.0	-	-	-	1920.12000	1920.12002	1925.12000	1932.12000	1932.12002
13.0	-	-	-	1920.13000	-	-	1932.13000	-
14.0	-	-	-	1920.14000	1920.14002	1925.14000	1932.14000	1932.14002
15.0	-	-	-	1920.15000	-	-	1932.15000	-
16.0	-	-	-	1920.16000	1920.16002	1925.16000	1932.16000	1932.16002
17.0	-	-	-	-	-	-	1932.17000	-
18.0	-	-	-	1920.18000	-	1925.18000	1932.18000	1932.18002
19.0	-	-	-	-	-	-	1932.19000	-
20.0	-	-	-	-	-	1925.20000	1932.20000	1932.20002
21.0	-	-	-	-	-	-	-	-
22.0	-	-	-	-	-	-	1932.22000	-
23.0	-	-	-	-	-	-	-	-
24.0	-	-	-	-	-	-	-	-
25.0	-	-	-	-	-	-	1932.25000	1932.25002

For further technical information, please refer to page 46 and 47.

### Expert advice

The coolant flush reductions sleeves HS-CF can be used for peripheral cooling due to their coolant channels.

Easy removing of the reduction sleeve from the hydro chucks thanks to the extractor EHS.

For part numbers and more information, please refer to page 41.



## Reduction sleeves HS and HS-CF

HS

Ø bore		Part no.			
[decimal"]	[inch]	HS 12	HS 20	HS 25	HS 32
0.125	1/8"	1912.03181	1920.03181	1925.03181	-
0.1875	3/16"	1912.04761	1920.04761	1925.04761	1932.04761
0.25	1/4"	1912.06351	1920.06351	1925.06351	1932.06351
0.3125	5/16"	1912.07941	1920.07941	1925.07941	1932.07941
0.375	3/8"	1912.09521	1920.09521	1925.09521	1932.09521
0.4375	7/16"	-	1920.11111	1925.11111	1932.11111
0.5	1/2"	-	1920.12701	1925.12701	1932.12701
0.5625	9/16"	-	1920.14291	1925.14291	1932.14291
0.625	5/8"	-	1920.15881	1925.15881	1932.15881
0.6875	11/16"	-	-	1925.17461	1932.17461
0.75	3/4"	-	-	1925.19051	1932.19051
0.8125	13/16"	-	-	1925.20631	1932.20631
0.875	7/8"	-	-	-	1932.22221
0.9375	15/16"	-	-	-	1932.23811
1.0	1"	-	-	-	1932.25401

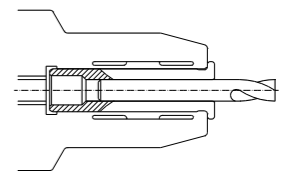
For further technical information, please refer to page 46 and 47.

Ø bore		Part no.			
[decimal"]	[inch]	HS 1/2"	HS 3/4"	HS 1"	HS 1 1/4"
0.125	1/8"	1913.03182	1919.03182	1926.03182	-
0.1875	3/16"	1913.04762	1919.04762	1926.04762	1931.04762
0.25	1/4"	1913.06352	1919.06352	1926.06352	1931.06352
0.3125	5/16"	1913.07942	1919.07942	1926.07942	1931.07942
0.375	3/8"	1913.09522	1919.09522	1926.09522	1931.09522
0.4375	7/16"	-	1919.11112	1926.11112	1931.11112
0.5	1/2"	-	1919.12702	1926.12702	1931.12702
0.5625	9/16"	-	1919.14292	1926.14292	1931.14292
0.625	5/8"	-	1919.15882	1926.15882	1931.15882
0.6875	11/16"	-	-	1926.17462	1931.17462
0.75	3/4"	-	-	1926.19052	1931.19052
0.8125	13/16"	-	-	-	-
0.875	7/8"	-	-	-	-
0.9375	15/16"	-	-	-	-
1.0	1"	-	-	-	1931.25402

For further technical information, please refer to page 46 and 47.

### Expert advice

The outer diameter of the reduction sleeves corresponds to each type, e.g. HS 12 equals diameter 12 mm.



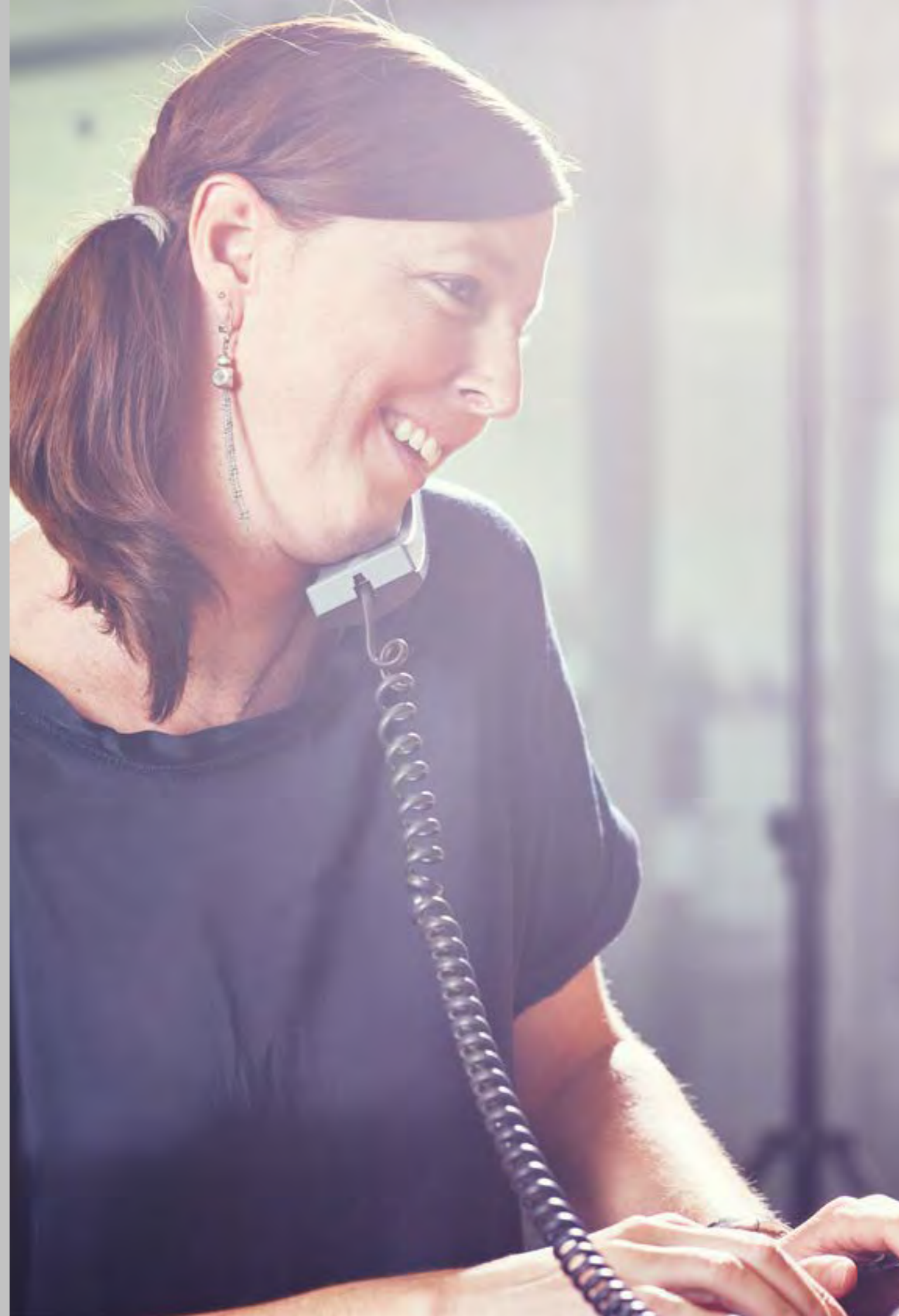
HS section drawing

### Expert advice

Our chip cover is ideally suited for the removal of chips. The cover can simply be clicked-in at the head of our reduction sleeves.

For part numbers and more information, please refer to page 41.





[Contents](#)

## Multi Line accessories

Enhance your tool life with the proper accessories for safe toolholding.

---

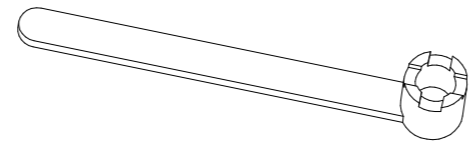
Wrenches for universal shell/ face mill holders FDS	40
Extractors for reduction sleeves EHS	41
Chip covers for reduction sleeves CC	41
Coolant tubes KSR	42
Wrenches for coolant tubes SKR	42
Toolholding fixtures	43

---

## Wrenches for universal shell/face mill holders FDS

FDS

Type	Part no.
<b>Wrenches FDS</b>	
FDS 16	7711.16000
FDS 22	7711.22000
FDS 27	7711.27000
FDS 32	7711.32000
FDS 40	7711.40000
FDS 50	7711.50000



FDS

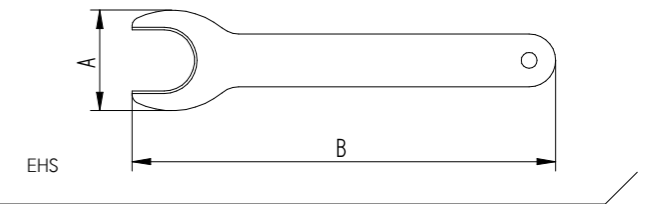


## Extractors for reduction sleeves EHS Chip covers for reduction sleeves CC

EHS

CC-HS

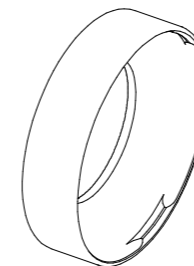
Type	Part no.	A [mm]	B [mm]
<b>Extractors for reduction sleeves EHS</b>			
EHS 12 – 1/2"	7321.12000	24	100
EHS 20 – 3/4"	7321.20000	38	160
EHS 25 – 1"	7321.25000	51	180
EHS 32 – 1 1/4"	7321.32000	63	200



EHS

Type	Part no.	Fits	Reduction sleeve Ø	
			[mm]	[inch]
<b>Chip covers for reduction sleeves CC-HS 12</b>				
CC-HS 12 – 1/2" / Ø 4.0 mm	7331.04200	HS 12, HS 1/2"	3-4	1/8"
CC-HS 12 – 1/2" / Ø 6.0 mm	7331.06600	HS 12, HS 1/2"	5-6	3/16"–1/4"
CC-HS 12 – 1/2" / Ø 10.0 mm	7331.10200	HS 12, HS 1/2"	7-10	5/16"–3/8"

<b>Chip covers for reduction sleeves CC-HS 20</b>				
CC-HS 20 – 3/4" / Ø 4.0 mm	7333.04200	HS 20, HS 3/4"	3-4	1/8"
CC-HS 20 – 3/4" / Ø 6.0 mm	7333.06600	HS 20, HS 3/4"	5-6	1/16"–1/4"
CC-HS 20 – 3/4" / Ø 10.0 mm	7333.10200	HS 20, HS 3/4"	7-10	5/16"–3/8"
CC-HS 20 – 3/4" / Ø 14.0 mm	7333.14200	HS 20, HS 3/4"	11-14	7/16"–1/2"
CC-HS 20 – 3/4" / Ø 16.0 mm	7333.16200	HS 20, HS 3/4"	15-16	9/16"–5/8"
CC-HS 20 – 3/4" / Ø 18.0 mm	7333.18200	HS 20, HS 3/4"	18	–



CC-HS

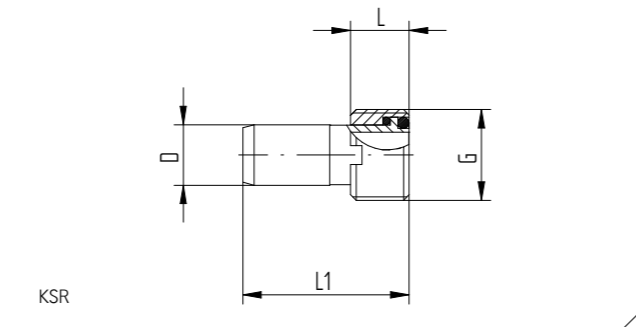
## Coolant tubes KSR

KSR SKR

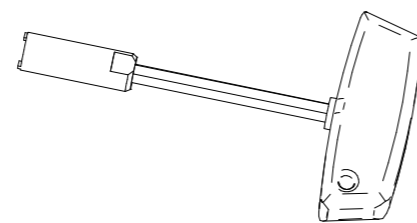
## Wrenches for coolant tubes SKR

Type	Part no.	Dimensions [mm]			
		D	L	L1	G
<b>Coolant tubes KSR</b>					
KSR 25	7211.25000	5	4.5	17	M 8 x 1
KSR 32	7211.32000	6	5.5	25.7	M 10 x 1
KSR 40	7211.40000	8	7.5	29.2	M 12 x 1
KSR 50	7211.50000	10	9.5	32.7	M 16 x 1
KSR 63	7211.63000	12	11.5	36.2	M 18 x 1
KSR 80	7211.80000	14	13.5	39.7	M 20 x 1.5
KSR 100	7211.00000	16	15.5	43.6	M 24 x 1.5
KSR 125	7211.12500	16	15.5	43.6	M 24 x 1.5

Type	Part no.
<b>Wrenches SKR</b>	
SKR 25	7212.25000
SKR 32	7212.32000
SKR 40	7212.40000
SKR 50	7212.50000
SKR 63	7212.63000
SKR 80	7212.80000
SKR 100	7212.00000
SKR 125	7212.12500



KSR



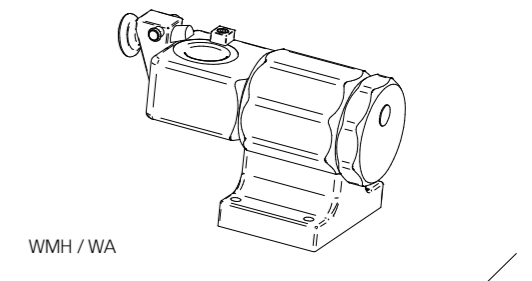
SKR

## Toolholding fixtures

WMH WA / SK

WA / HSK WA / C

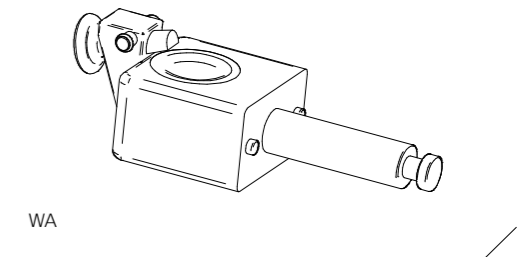
Type	Part no.	Fits this interface
<b>Tool assembly WMH</b>		
WMH-AC 45°	7813.00000	-
WMH-AC 90°	7813.00100	-
<b>Tool adapter WA / SK</b>		
WA / SK 30	7814.30100	BT / CAT / SK 30
WA / SK 40	7814.40100	BT / CAT / SK 40
WA / SK 50	7814.50100	BT / CAT / SK 50



WMH / WA

Type	Part no.	Fits this interface
<b>Tool adapter WA / HSK-A / C / E</b>		
WA / HSK-A / C / E 25	7814.25300	HSK-A / C / E 25

Type	Part no.	Fits this interface
<b>Tool adapter WA / HSK-A</b>		
WA / HSK-A 32	7814.32200	HSK-A 32
WA / HSK-A 40	7814.40200	HSK-A 40
WA / HSK-A 50	7814.50200	HSK-A 50
WA / HSK-A 63	7814.63200	HSK-A 63
WA / HSK-A 80	7814.80200	HSK-A 80
WA / HSK-A 100	7814.00200	HSK-A 100



WA

Type	Part no.	Fits this interface
<b>Tool adapter WA / HSK-C / E</b>		
WA / HSK-C / E 32	7814.32500	HSK-C / E 32
WA / HSK-C / E 40	7814.40500	HSK-C / E 40
WA / HSK-C / E 50	7814.50500	HSK-C / E 50
WA / HSK-C / E 63	7814.63500	HSK-C / E 63

Type	Part no.	Fits this interface
<b>Tool adapter WA / HSK-B / D / F</b>		
WA / HSK-B / D / F 63	7814.63400	HSK-B / D / F 63

Type	Part no.	Fits this interface
<b>Tool adapter WA / C</b>		
WA / C3	7814.03700	CAPTO C3
WA / C4	7814.04700	CAPTO C4
WA / C5	7814.05700	CAPTO C5
WA / C6	7814.06700	CAPTO C6
WA / C8	7814.08700	CAPTO C8



Imprint

# Get in touch

We love to talk to you and share our toolholding expertise to maximize your productivity.

## **REGO-FIX AG**

Obermattweg 60 / 4456 Tenniken / Switzerland  
P +41 61 976 1466 / F +41 61 976 1414  
rego-fix@rego-fix.ch / [www.rego-fix.com](http://www.rego-fix.com)

Subsidiaries (distribution companies)

## **REGO-FIX Tool Corp.**

7752 Moller Road / Indianapolis / IN 46268 / USA  
P +1 317-870-5959 / F +1 317-870-5955 / [info@rego-fix.com](mailto:info@rego-fix.com)

## **REGO-FIX Precision Tools (Shanghai) Co., Ltd.**

Room 6301 / Building 6 / No. 338 Jialilue Road  
Zhangjiang Hi-Tech Park / Shanghai / P.R. China 201203  
P +86 21 6160 6933 / F +86 21 6160 6939 / [sales@rego-fix.cn](mailto:sales@rego-fix.cn)

Find your sales partner on [www.rego-fix.com](http://www.rego-fix.com)

Printed by Gmähle-Scheel Print-Medien GmbH  
Printed on Arctic Highwhite  
Arctic Highwhite is FSC certified for sustainable forestry.

---

REGO-FIX AG is ISO certified:  
ISO 9001 for quality management / since 1996  
ISO 14001 for environmental management / since 2007

---

This document should not be used or relied on for any purpose other than that intended by REGO-FIX AG.  
No part of this document may be reproduced or transmitted in any other form without the express written permission of REGO-FIX AG.

---

The data given in this catalog are dependent on the conditions under which they are measured and are derived from tests carried out under defined lab conditions at REGO-FIX AG. The performance of these tools depends on the conditions under which they are used and may vary from case to case. The information given in this catalog is believed to be correct. REGO-FIX AG however assumes no responsibility or liability for any errors, inaccuracies or omissions that may appear in this catalog. Information in this catalog is subject to change without notice and should not be construed as a commitment by REGO-FIX AG or its subsidiaries. This is especially valid for adaptations to new or changed international standards or improvements to the products performance or production processes.

---

Softsynchro® is a registered trademark of EMUGE-Werk Richard Glimpel GmbH & Co. KG. Viton® is a brand of synthetic rubber and fluoropolymer elastomer of DuPont Performance Elastomers. Capto® is a registered trademark of AB Sandvik Coromant.

© Copyright 2016 REGO-FIX AG

